

Släntklippare – BM 160 / BM 180 / BM 200 PRO

Svensk manual – montering, drift, transport och underhåll

Tillverkare: FPM Agromehanika, Boljevac, Serbien

Innehåll

1. Om manualen	3
2. Säkerhet	3
2.1 Grundregler	3
2.2 Till- och frånkoppling	3
2.3 Kraftöverföringsaxel	3
3. Produktbeskrivning och användningsområde	3
4. Tekniska data	4
5. Montering och inställning	4
6. Tillkoppling till traktor	4
7. Kontroller före användning	4
8. Drift	4
9. Klipphöjd och stödrulle	4
10. Transport	5
11. Underhåll och service	5
12. Oljor och smörjmedel	5
13. Förvaring	5
14. Reservdelar	5
Referensbilder från originalmanualen	5

1. Om manualen

Denna manual gäller släntklipparna BM 160, BM 180 och BM 200 PRO. Den beskriver säker användning, montering, drift, transport och underhåll.

Vissa tabeller/figurer och reservdelsbilder återges som referensbilder från originalmanualen i slutet av dokumentet (kan innehålla engelska/serbiska).

2. Säkerhet

Följ alltid säkerhetsanvisningarna. Olyckor sker oftast vid drift, underhåll eller transport när rutiner inte följs.

2.1 Grundregler

- Läs igenom manualen innan släntklipparen används första gången.
- Använd åtsittande kläder och lämplig skyddsutrustning (glasögon, handskar, skyddsskor).
- Håll händer, fötter och kläder borta från roterande delar. Ingen får vistas i arbetsområdet.
- Släntklipparen kan kasta föremål. Arbeta extra försiktigt nära vägar, byggnader och människor.
- Kontrollera före start att skydd, bultar och fästdetaljer är korrekt monterade och åtdragna.
- Stäng av motor, ta ur nyckel och koppla ur kraftuttaget innan justering/smörjning/rengöring.
- Vänta tills alla roterande delar stannat helt innan du närmar dig maskinen.
- Transportera aldrig passagerare på traktor eller redskap.
- Använd endast original- eller av tillverkaren godkända reservdelar.

2.2 Till- och frånkoppling

- Spärra traktorns hydraulreglage före till- och frånkoppling så att oavsiktlig lyftning/sänkning förhindras.

- Kontrollera kompatibilitet mellan traktorns trepunktskategori och släntklipparens fästen.
- Stå aldrig mellan traktor och redskap vid användning av externa hydraulreglage.
- Säkra redskapet i transportläge före körning på väg.

2.3 Kraftöverföringsaxel

- Använd endast godkänd kraftöverföringsaxel.
- Skydd och kedjor ska vara monterade och oskadade; skyddet får inte rotera med axeln.
- Montering/demontering får endast ske med urkopplat kraftuttag och avstängd motor.
- Kontrollera röröverlappning och korrekt längd i både arbets- och transportläge.
- Håll arbetsvinkel så liten som möjligt. Byt skadade komponenter omedelbart.

3. Produktbeskrivning och användningsområde

Släntklippare BM PRO används för klippning/finfördelning av gräs och växtrester på slänter, vägkanter och grönytor. Maskinen kopplas i trepunktsfäste och drivs via traktorns kraftuttag. Utföranden kan ha sidoförskjutning och stödrulle för klipphöjd.

4. Tekniska data

Exakta modell- och specifikationsdata (arbetsbredd, vikt, kraftbehov, varvtal, dimensioner) finns i referensbilderna i slutet av manualen.

5. Montering och inställning

Montera släntklipparen på plan yta. Kontrollera att alla skydd och säkerhetsdetaljer är korrekt monterade. Följ moment- och monteringsanvisningar i referensbilderna. Efter första drifttimmen ska fästdetaljer efterdras.

6. Tillkoppling till traktor

Koppla släntklipparen i trepunktslyften. Fäst först vänster lyftarm, därefter höger lyftarm och sist topplänk. Stabilisera med traktorns stabilisatorstag/kedjor så att sidledsrörelser begränsas (ca 5–10 cm enligt originalet).

Anslut kraftöverföringsaxeln och kontrollera skydd, kedjor och arbetsvinkel. Om maskinen har hydraulik: anslut slangar enligt traktorns uttag och kontrollera att slangar inte riskerar klämning.

7. Kontroller före användning

- Kontrollera att skydd och kåpor är på plats och hela.
- Kontrollera knivar/slagor: slitage, skador och infästningar.
- Kontrollera remmar: skick och remspänning.
- Smörj samtliga smörjpunkter enligt underhållsschema.
- Kontrollera oljor/fetter enligt tabell i referensbilderna.
- Funktionstesta kort på låg belastning och lyssna efter onormala ljud/vibrationer.

8. Drift

Arbeta med jämn körhastighet anpassad till vegetation och terräng. God klippning uppnås ofta med låg traktor fart och hög rotorhastighet. Undvik att köra över stora stenar och hårda föremål.

Om rotorn fastnar: lyft redskapet, minska hastigheten och arbeta inte i för våt mark eller när vegetationen är för hög enligt originalets rekommendationer. Stanna omedelbart vid kraftiga vibrationer och kontrollera rotor och knivar/slagor.

9. Klipphöjd och stödrulle

Klipphöjd ställs normalt med stödrullen. Justera enligt referensbilderna och säkerställ att rullen och infästningar är ordentligt åtdragna.

10. Transport

Säkra släntklipparen i transportläge. Följ gällande trafikregler och beakta redskapets bredd/höjd. Lås sidoförskjutning (om utrustad) och säkra kraftöverföringsaxeln i hållare när den inte används.

11. Underhåll och service

Utför underhåll enligt intervaller: smörjning, efterdragning, kontroll av knivar/slagor, skydd och remmar. Byt slitna eller skadade delar omedelbart.

Rembyte och remspänning: följ originalets anvisningar (referensbilder). Använd rätt rems typ och kontrollera att remskivor ligger i linje.

12. Oljor och smörjmedel

Använd oljor och smörjmedel enligt tabellen i referensbilderna. Följ rekommenderade intervaller och mängder. Vid service: stäng av motor, ta ur nyckel och koppla ur kraftuttag.

13. Förvaring

Rengör släntklipparen efter säsong. Smörj samtliga punkter och kontrollera slitdelar. Förvara stabilt och torrt. Skydda exponerade ytor mot korrosion vid behov.

14. Reservdelar

Vid beställning av reservdelar: ange modell (BM 160/180/200 PRO) och serienummer (se identifieringsskylt). Sprängskisser och reservdelslistor finns i referensbilderna.

Referensbilder från originalmanualen

Följande sidor är utdrag ur originalmanualen och innehåller etiketter, tabeller, moment, serviceinstruktioner och reservdelsbilder. De kan innehålla engelska/serbiska.

Persons who only work in our factory are not official representatives of the factory and do not have the right to undertake any obligations on its behalf.

No warranty covers product equipment beyond that provided, and the factory is not responsible for injuries resulting from such use.

WARNING LABELS

The following warning labels are placed on your trinket for your safety and the safety of the people working with you. With this manual in hand, walk around the machine and check those warning labels and manual instructions. Labels must be legible, if not replace them.

The identification of small plant residues is done through an identification plate that contains the following marks:

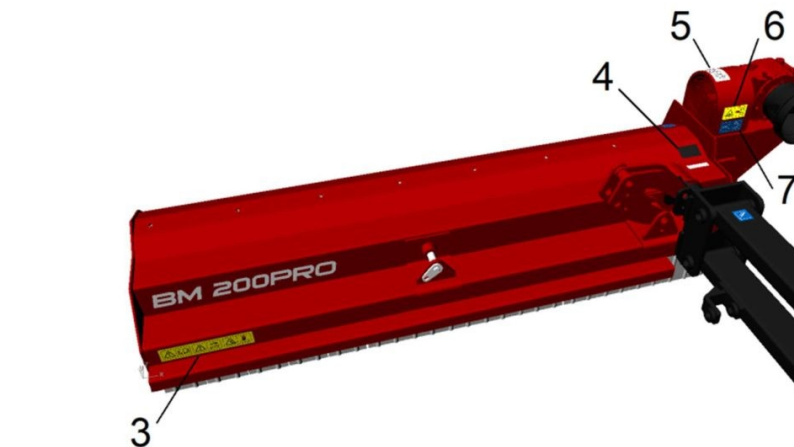
- In the field with the letter "Z" - the number of the certificate (document) on occupational safety is entered.
- In the "MASS/WEIGHT" field - the weight of the product is entered.
- In the "YEAR" field - year of production (last two digits).
- In the »SERIES/TYPE« field - series designation and commercial designation of the product.
- In the "№" field, the number of the small plant residue is entered, which is made up of 9 digits and has the following meaning: first digit - year of production
second and third - manufacturer's code
the other six digits - the serial number of the product in production



Photo 1.






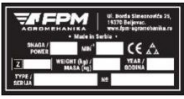
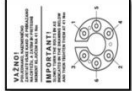


Photo 2.



strana | 5

Photo 3.

WARNING LABELS

	STICKER	Description
1.		Rotating elements! Protect feet and hands from rotating elements. There is a possibility of throwing objects from the ground onto objects and persons. Other persons must stand at a safe distance from the machine.
2.		The place where the grease gun is located! Mandatory, daily, lubrication before the beginning of work.
3.		Before working with the machine, read the manual carefully. During any adjustment, lubrication or cleaning of the implement, turn off the tractor and wait for all moving parts to stop.
4.		Identification plate
5.		Evenly, alternately screw the screws as shown in the drawing. Tighten the torque with a wrench to 41 Nm
6.		Rotating elements! Protect feet and hands from rotating elements. Other persons must stand at a safe distance from the machine.
7.		The number of revolutions of the output shaft on the tractor.

DELOVI SITNILICE BILJNIH OSTATAKA

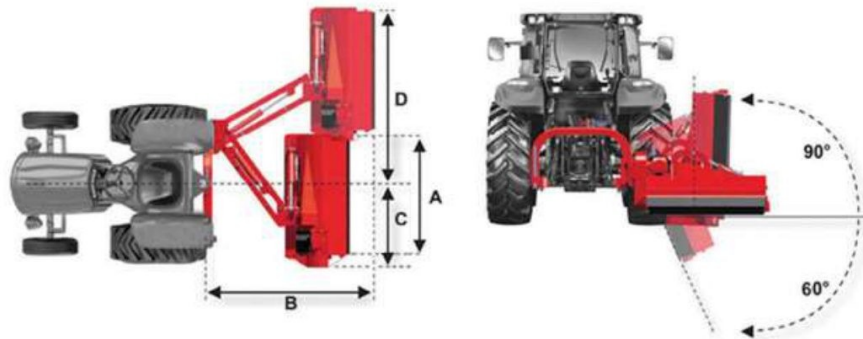
- | | |
|--|---------------------------------------|
| 1. Carrying frame (housing) of the mulcher | 10. Hydraulic cylinder of the mulcher |
| 2. Multiplier | 11. Hand hydraulic cylinder |
| 3. Lateral belt transmission | 12. Third connection point |
| 4. Cardan shaft protector | 13. Connection point |
| 5. Attachment frame of the mulcher | 14. Fuse |
| 6. Cardan shaft holder | 15. Rotating mechanism |
| 7. Rate | 16. Connecting frame connection |
| 8. Connecting frame support | |
| 9. Protective curtainsValjak | |



- ▲ The majority of accidents occur during operation, maintenance and transport, which are the result of non-observance of basic safety requirements. For the operation and maintenance of the tool, whether you work alone, with family members or other people, be sure to read and follow the basic procedures for working with the tool. In addition, stickers with warnings are placed on the trinkets, which should draw attention to the mandatory observance of safety.- Navedena uputstva za rukovanje, održavanje i sigurnost pri radu moraju se bezuslovno poštovati, da bi ste osigurali bezbedan i siguran rad sa sitnilicom.
- ▲ Before starting work, the operator must be absolutely familiar with the functioning of all parts of the machine, during work it may be too late. First of all, learn to turn off the trinket quickly and safely, in the event of an emergency.
- ▲ The instructions for handling and maintenance must be kept for the intended life of the small item.
- ▲ The metal nameplate must always be legible, visible and clean.
- ▲ When attaching or detaching the shredder from the tractor, always move the support foot to the appropriate position (safety).
- ▲ The implement must be aggregated on tractors with adequate engine power.
- ▲ Be especially careful when unhooking or hooking the small tractor to the tractor, because the area around the lifting arms is a dangerous zone.
- ▲ Pay attention to the permissible axle load and total weight. Due to the weight, there is a different redistribution of the load na osovina ma točkova. - Due to driving safety requirements, use a tractor with a cab. Keep all windows closed during work.
- ▲ Before starting the machine, and for a very short distance, always move it and secure it in its transport position. Pay attention to the permitted dimensions during transport.
- ▲ Before you start driving on public roads, be sure to secure your small item for safe driving and respect the rules of behavior in public traffic.
- ▲ When required by special circumstances, use light signals to indicate danger if it is not prohibited by traffic rules. - Never transport other people on the tractor or tractor during operation or transport.
- ▲ Never transport small items unfastened and secured for safe driving.
- ▲ Never drive a small car that is switched on.- Nikada ne uključujte priključno vratilo traktora dok je sitnilica u transportnom položaju. - Never leave the driver's seat while the tractor is in operation.

SPECIFICATION OF TECHNICAL CHARACTERISTICS

												
BM 160 PRO	1,6	2,1	33 (45)	II, III	540	159	4	20	60	3-12	✓	680
BM 180 PRO	1,8	2,3	35 (50)	II, III	540	159	4	22	66	3-12	✓	720
BM 200 PRO	2	2,5	53 (70)	II, III	540	159	4	24	72	3-12	✓	770



	A	B	C	D
BM 160 PRO	160	240	29	274
BM 180 PRO	180	240	29	294
BM 200 PRO	200	240	29	314

TRANSPORT OF MULCHER



DANGER: If small items are transported on public roads, be sure to secure them for safe driving and respect the rules of behavior in public traffic.
The tool must be raised at least 40 cm from the ground.

If the MULCHER is transported by truck or rail, you should study the "SPECIFICATION OF TECHNICAL CHARACTERISTICS" where weights and dimensions are given.

THE AGGREGATION PROCEDURE ON THE TRACTOR

WORK BEFORE USE



ATTENTION:
Attaching a tractor to a tractor can be a very dangerous operation.
Pay special attention and strictly follow the given instructions.
Proceed as follows:

- Use a tractor whose configuration can meet the needs of the shredder.
- Make sure that there are no objects, people or animals near the implement and that the tractor's drive shaft is switched off.
- Make sure the tool is in a stable, horizontal position.
- Slowly place the tractor at an angle of 90° in relation to the implement, using the hydraulic lever lower the lower tractor levers to the height of the axis of the connection points of the shredder and turn off the tractor.

IMPORTANT: If the tractor is misaligned, it is much easier to drive the tractor back and forth again than it is to try to get the implement to the tractor linkages using your own labor.

- Install the cardan shaft, first in the splined shaft on the implement, and the other end on the output shaft of the tractor. The shaft must be secured with existing fuses in that position.
- When the cardan shaft is maximally extended in working conditions, the telescopic tubes must overlap by at least 1/3 of the length (A in Figure 7).
- When the cardan shaft is maximally retracted, there must be a gap of 4 cm (B, picture 7).

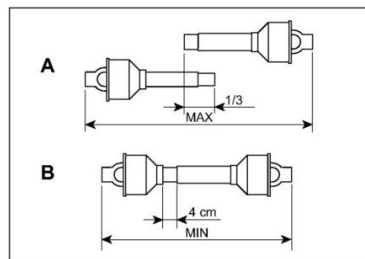


Photo 7.

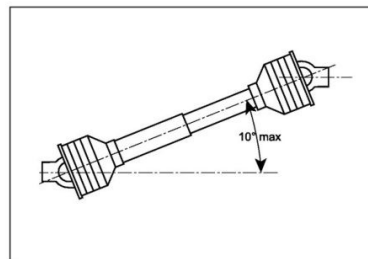


Photo 8.

- Attach the left lower tractor link to the left arm of the implement and secure it with the existing studs.
- Attach the right lower tractor link to the right arm of the implement and secure it with the existing pins.
- Secure the left and right lower tractor link with appropriate chains so that they are parallel to the tractor. This is done to limit the lateral swing of the implement from 5 to 10 cm.
- Then from the tractor seat, with the hydraulic control lever in the lower position on the quadrant, slowly drive the tractor forward or backward until it is possible to attach the front end of the upper tractor lever (topling) to the tractor and secure it in that position with the existing pins.
- When you have attached the tool to the tractor in the previous way, it is necessary to bring the upper surface of the tool to a horizontal position, that is, to be parallel to the ground. This is achieved by lengthening or shortening the upper tractor link (topling).

IMPORTANT: The sequence of attachment of implements to the tractor should always be performed in the same way, namely:

- a) left lower tractor lever
- b) right lower tractor lever
- c) upper tractor lever

IMPORTANT:

After you have finished bringing the device to a horizontal (horizontal) position, you can access the other settings necessary for the normal functioning of the device.

- Using the hydraulics, carefully raise the shredder so that the angle of breaking of the cardan shaft is not too large (never greater than 10°, picture 8.). Once you have raised the tool to its highest position in this way, check the following:

- a) whether the cardan shaft rotates freely and whether its joints are not stuck somewhere,
- b) is the cardan shaft not stretched too much,
- c) check if the cardan guard rotates freely,
- d) fasten the cardan protection with the existing chains from the cardan shaft.

VAŽNO: Veoma je važno da zašтите na izlaznom vratilu traktora i na priključnom vratilu oruđa preklapaju kardansko vratilo za najmanje 5 cm. Ako neke zašтите nisu u dobrom stanju, moraju se odmah zameniti novim.



OPASNOST:

Nikada ne modifikovati ili adaptirati kardansko vratilo. Ako je potrebno, kontaktirajte najbliži servisni centar.

RAD SA SITNILICOM BILJNIH OSTATAKA - MULČAROM

RADNI POLOŽAJ



OPASNOST:

Rukovaoc oruđem mora da sedi isključivo na vozačkom mestu, jer samo sa tog mesta može pravilno da upravlja oruđem. Pre nego što napusti vozačko mesto, rukovaoc mora da zaustavi rad oruđa, povuče parkirnu kočnicu i ugasi motor traktora.

ZA VREME RADA

Posle pravilnog priključenja oruđa na traktor, zauzimanja vozačkog mesta i startovanja traktora, uraditi sledeće:

- Pomoću hidraulike podignite oruđe na 10-20 cm od tla.
- Pustite da traktor radi sa malim brojem obrtaja motora i uključite izlazno vratilo traktora.
- Ubacite menjač u brzinu za kretanje napred i povećajte broj obrtaja motora.
- Postepeno (lagano) spuštajte oruđe dok ne dodirne zemlju. Ovim omogućujete oruđu da se adaptira na reljef zemlje.



CAUTION:

Do not over-accelerate when the tool is running.

- drive the implement for a short time, and then check whether the quality of the shredding is satisfactory,
- you can adjust the shredding height by adjusting the roller.
- Factors to consider in order to select the appropriate shredding:
- stem height,

THE ROTOR IS STUCK

- the soil is too wet
- lift the tool off the ground
- reduce the speed of the tractor
- do not work if the grass is too tall

Remove all the plant mass that has stuck to the sides of the rotor, so that the bearings do not overheat.

THE TOOL JUMPS AND VIBRATES

- stuck foreign body (stump, tree, stone) between the knives
- the knives are mounted incorrectly
- the knives are worn or broken
- during operation, the rotor is damaged by the impact of foreign objects in its central part

OTHER DEFECTS

The tool does not shred the plant mass along its entire length - the blades are of unequal length. In relation to the shortest knife, sharpen all knives to the same length on the left and right.

WORK ON INCLINED TERRAIN

When working, move the tool in the direction of the slope.

WORKING ELEMENTS - CUTTING KNIVES

Check the condition of the working elements - the cutting knives with which the shredder is equipped and make sure that they are worn. If the blades become covered and break during operation, you must immediately replace them with new ones.



WARNING:

Changing the cutting blades is a dangerous operation, be careful.

When replacing the cutting blades, proceed as follows:

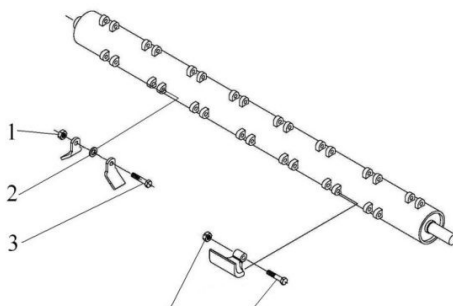


Photo 10.

Park the tractor with the implement on a level surface, then lift the implement off the ground using the hydraulics.

- Place two strong washers on both ends of the tool.
- Lower the implement onto the pads, turn off the tractor and pull the parking brake.

A pair of blades must be mounted opposite each other, in order to maintain the "balance" of the rotor.

When replacing worn or broken blades, do the following:

- Remove the nut (pos. 1, picture 10.) from the screw that tightens the worn knives. Carefully study the position of all parts during the replacement phase, especially the spacer sleeve. Mount the new knives and other parts in the same place, in the same position.
- If the screws and nuts are damaged, be sure to replace them as well.



ATTENTION:

Before starting any operation, make sure the tool is parked on a level surface.

**Secure the implement against movement by placing chocks under the wheels.
Maintenance, adjustment and preparation of the tool for work, works only when the cardan shaft is removed from the tool.**

**The service frequency suggested in this manual refers to normal conditions of use.
Service operations must be carried out more frequently under severe conditions of use.**



CAUTION:

Before injecting the grease, you need to wipe the area around the grease nipples and the grease nipple itself with a dry cloth, so that mud and dust are not mixed with the grease and thus reduce the quality of lubrication.

Lubricate with the utmost care, because injecting a large amount of grease under pressure can damage the protection of the bearings. Lubricate all places intended for lubrication.



WARNING: Keep all lubricants out of the reach of children!

**Carefully study all warnings on the packages of grease and oils. After working on lubrication, the operator - repairman must thoroughly clean the parts of the body from the remains of grease and oil.
Dispose of used oil in the prescribed manner, in accordance with the "Law on Environmental Protection".**

REPLACEMENT OF V-BELTS



V-belts are properly tightened if the deflection is max. 10 mm to prevent excessive sliding. Insufficiently tensioned belts are the cause of poor operation of the grinder and premature damage and tearing of the belts.

When replacing belts or checking their tightness, do the following:

- Unscrew the nuts and remove the protective cover for the V-belts.
- Loosen the screw holding the drive pulley housing.
- Loosen the nut of the adjusting screw.
- Tighten the adjusting screw as much as necessary to ensure the required tension of the belts.
- Tighten the control nut of the adjusting screw.
- Tighten all screws holding the drive pulley housing.
- Put the protective cover back in place.

All parts of the transmission from the reducer to the drive pulley must be aligned when tensioning the belts. Loosen the screws on the reducer plate, raise or lower the reducer so that the transmission shaft is parallel to the upper tool plate, then tighten the screws.

Check that the pulleys are aligned when the belts are tightened or changed. To check, use a metal ruler that you have to place on the surfaces of both pulleys. The edge of the ruler must adhere to all four points.



WARNING: IT IS NECESSARY AND IMPORTANT TO CHECK THE TENSION OF THE BELTS AND TIGHTEN THEM CORRECTLY. IT IS ESPECIALLY IMPORTANT TO DO THIS AFTER 0.5 HOURS OF USING THE WEAPON. WHEN REPLACING WORN BELTS, REPLACE THE ENTIRE SET OF BELTS, REGARDLESS OF THE CONDITION OF ONE BELT IN RELATION TO THE OTHER.

LUBRICATION

It is very important to properly lubricate any tool, both the transmission and all the parts that slide into each other, in order to meet the strict requirements for work in the most difficult conditions, which is of vital importance for the long life and functionality of the tool.

That's why you have to perform lubrication regularly - at certain time intervals.

The lubrication interval given in this manual refers to the tool used under normal conditions.

If the tool works in difficult working conditions, then the lubrication must be in shorter time intervals.

RECOMMENDED OILS

To lubricate the gears in the multiplier, it is recommended to use hypoid oil SAE 85 W-140, to achieve the quality level of the US military specification MIL-L-2105C and API Service Classification GL-5 or the JUS B.H3.303 Type "MP-5" standard.

RECOMMENDED GREASE

- For lubrication of all places where grease nipples are located, use calcium grease with an additive that increases adhesion to metal surfaces, and that meets JUS B.H3.634 VM-2 specifications NLGI-2.

FOR OIL CHANGE USE:

Manufacturer name	Oil mark
Rafinerija Beograd	HIPOL - B
"FAM" Kruševac	MULTI HIPO
"MODRIČA" Modriča	HIPOIDNO ULJE - B
"INA" Zagreb	HIPENOL GTL
"SHELL"	SPIRAX - HD
"MOBIL"	MOBILUBE - HD
"VALVOLINE"	"VALVOLINE" X-18
"ESSO"	ESSO GEAR OIL GX
"CASTROL"	CASTROL EPX

FOR GREASE CHANGE USE:

Manufacturer name	Oil mark
Rafinerija Beograd	LUMA - 2
"FAM" Kruševac	FOR - 2
"MODRIČA" Modriča	LITMA - 2
"INA" Zagreb	LIS - 2
"SHELL"	ALVANJA R-2
"MOBIL"	MOBILUX 2
"VALVOLINE"	GREASE LB1-2

SERVICE ADJUSTMENTS - AFTER THE FIRST 8 HOURS OF OPERATION

Check each tool after the first 8 hours of use. The verification procedure is as follows:

- Detailed check of the basic condition of the tool.
- Checking the wear and damage of the cutting knives, be sure to tighten all the screws and nuts on the rotor with the knives.
- Tighten all other screws and nuts with the required torque.

SERVICE ADJUSTMENTS - AFTER EVERY 20 HOURS OF OPERATION

- Check and tighten all screws and nuts on the blade rotor with the required torque.
- Lubricate all parts of the cardan shaft, bearings on the roller, all screws on the plate for adjusting the height of the roller.

SERVICE ADJUSTMENTS - AFTER EVERY 100 HOURS OF OPERATION

- Check the oil level in the multiplier housing. If necessary, add oil through the plug on the top of the housing.

SERVICE ADJUSTMENTS - AFTER EVERY 500 HOURS OF OPERATION

- Changing the oil in the multiplier housing after every 500 hours of operation or at least once a year;
- It is best to drain the oil immediately after the tool is finished, since the oil is still warm and the sediment has not yet settled in it.

STORAGE - STORAGE OF MULCHER

- If you do not use the shredder for a long period of time, then all parts that came into contact with plant residues should be completely cleaned of stuck-on soil and plant residues.
- After cleaning, wash the entire tool well.
- Drain the oil from the reducer and fill it with clean oil to the appropriate level (dispose of the old oil, discard it and comply with the law on environmental protection).
- Carefully remove all excess oil with a cloth.
- Tighten all screws and nuts on the tool.
- Clean rusty surfaces and exposed areas and coat with protective paint.
- Raise the tool on a wooden stand placed under a canopy or in a separate dry room. If you have done the previous operations carefully, the trinket is mobile and ready for use in the next working season.



FPM AGROMEHANIKA DOO
Đorđa Simeonovića 25
19370 Boljevac – Srbija

DECLARATION OF CONFORMITY OF MACHINES

We, **FPM Agromehanika DOO**,
Đorđa Simeonovića 25, 19370, Boljevac, Srbija

we hereby declare, as manufacturers, within our responsibility, that the product is

Type: **BOČNI MULČAR**

Model: **BM 160 PRO** **FPM 618.279 - 1,6 m**
BM 180 PRO **FPM 618.212 - 1,8 m**
BM 200 PRO **FPM 618.190 - 2,0 m**

Year of production: **2022**

in accordance with the requirements established by the European Directive 2006/42/EC (for machines).

The product complies with the following standards:

- SRPS EN ISO 12100:2014
- SRPS EN ISO 13857:2020
- SRPS EN ISO 4254-1:2016
- SRPS EN ISO 4254-12:2013
- SRPS EN ISO 4254-12:2013 / A1:2017
- EN 1553:2000
- SRPS ISO 11684:1999
- SRPS EN ISO 11201:2014

In Boljevcu,
29.11.2022.

Potpis odgovorne osobe:
GENERALNI DIREKTOR
Branislav Rajić, maš.ing



LIST OF SPARE PARTS - Instructions for ordering spare parts –

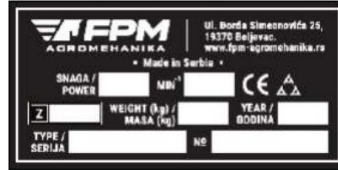
To order spare parts or components, contact the sales department - spare parts.

The existing pictures on the following sheets show the machine parts which are numbered.

In the text next to the picture is given: the serial number of the machine part, its identification number, the quantity in the plant residue shredder assembly and, if necessary, the dimensions or standard. Pay attention to the additional markings on the sheets.

In order to avoid misunderstandings and wrong delivery when ordering spare parts, you must specify:

- mark and number of the change (series, №)
- number and name of the spare part (specify in this list)
- quantity of requested spare parts
- desired delivery method (post, express, etc.)
- full address of the customer (with postal code)

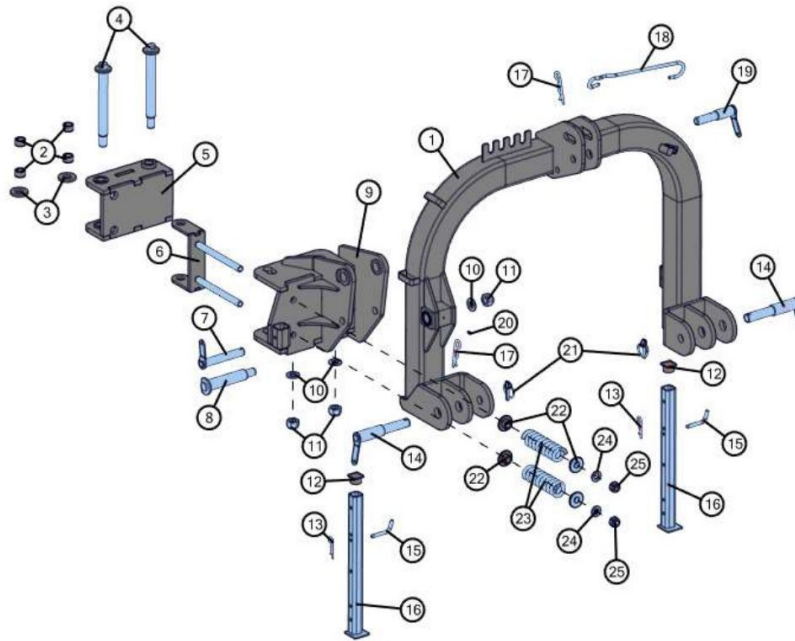


The image shows a black identification plate for FPM AGROMEHANIKA. The plate contains the following text and fields:

- FPM AGROMEHANIKA** logo and name.
- Address: **U. Borda Strozovića 25, 19270 Begevac, www.fpm-agromehanika.rs**
- Country: **Made in Serbia**
- Technical specifications fields:
 - SNAGA / POWER** (with a blank box)
 - MBI** (with a blank box)
 - WEIGHT (kg) / MASA (kg)** (with a blank box)
 - YEAR / GODINA** (with a blank box)
- Compliance logos: **CE** and **AAA**.
- Identification fields:
 - Z** (with a blank box)
 - TYPE / SERIJA** (with a blank box)
 - №** (with a blank box)

On your small change on the plate shown in the picture, the series and serial number are stamped. Warranty cases and other issues cannot be resolved without serial and serial number information.

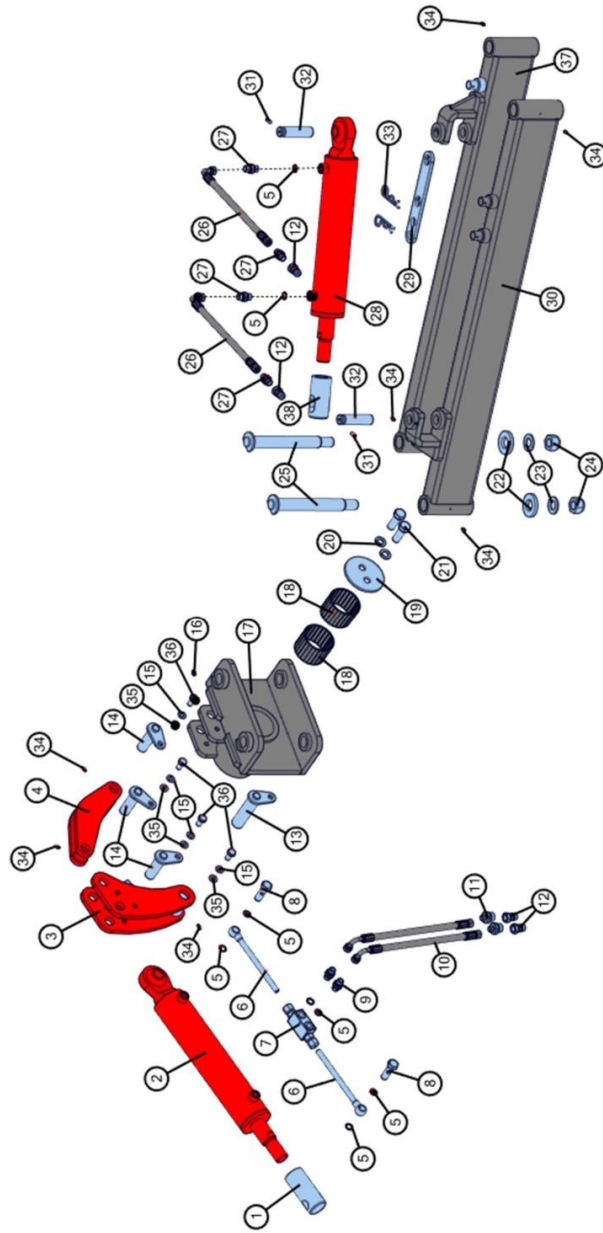
Spare parts list



Slika 1

No.	Naziv	Oznaka	Ident	Količina
1	PRIKLJUČNI RAM SH - Z.S.	618.08.755	63705	1
2	ČAURA BK090 3020	000.00.000	64281	4
3	PODLOŠKA	618.09.522	92477	2
4	OSOVINA PRIKLJUČKA PROFI - Z.S.	618.09.605	93238	2
5	UNUTRAŠNJI PRIKLJUČAK RAMA - Z.S.	618.09.603	93233	1
6	NOSAČ OPRUGA - Z.S.	618.09.523	92476	1
7	ZABRAVLJIVAČ RAMA - Z.S.	618.08.537	62285	1
8	OSOVINA RAMA - Z.S.	618.08.534	62282	1
9	PRIKLJUČAK RAMA PROFI - Z.S.	618.09.515	92402	1
10	PODLOŠKA B24	021.20.001	7950	3
11	NAVRTKA M24-6H	020.06.011	56771	3
12	ZAŠTITNI ČEP	618.06.666	40271	2
13	OSIGURAČ-R 4X64	627.12.857	4977	2
14	PRIKLJUČNA TAČKA BOČNOG MULČARA - Z.S.	618.09.506	92298	2
15	OSIGURAČ STOPE	618.06.664	40272	2
16	STOPA - Z.S.	618.06.669	40267	2
17	OSIGURAČ-R 6.3X97	502.00.435	36563	2
18	DRŽAČ KARDANSKOG VRATILA	618.06.676	40276	1
19	TREĆA PRIKLJUČNA TAČKA - HERKULES - Z.S.	618.08.260	58396	1
20	MAZALICA AM6	020.16.001	2392	1
21	PREKLOPNI OSIGURAČ 12X45	611.20.010	23897	2
22	ČAURA OPRUGE	618.09.517	92452	4
23	OPRUGA 10x55x185	000.00.000	63889	2
24	PODLOŠKA A20	021.20.001	2515	2
25	NAVRTKA M20x1.5-6H	020.06.011	41828	2

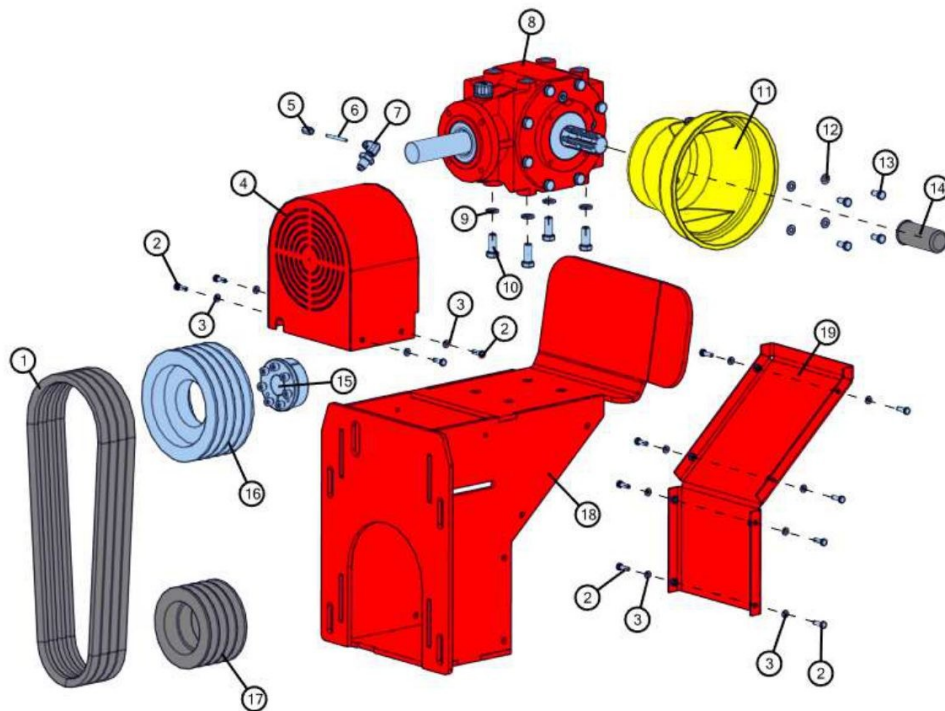
Tabela 1



Slika 2

No.	Naziv	Oznaka	Ident	Količina
1	ČAURA HIDROCILINDRA	618.08.344	61003	1
2	HIDROCILINDAR DVOSM. DEJSTVA 40/70	618.08.332	60974	1
3	POLUGA MULČARA - Z.S.	618.08.530	62278	1
4	POLUGA PRIKLJUČKA - Z.S.	618.08.525	62275	1
5	ZAPTIVKA <z 7930 501.30.801 A16 x 20	023.82.001	27844	8
6	OKO+CEV 12L200-3/8" - 811 516	000.00.000	64269	2
7	VENTIL NEPOVRATNI 12-ISI-815 765	000.00.000	64268	1
8	VIJAK PROVODNI M16X1.5	608.00.172	43892	2
9	PRIK.REDUCIR GES10LR3/8" S	000.00.000	64272	2
10	HID. CREVO 2SC DN08 M16x1,5 L=4000	000.00.000	64276	2
11	SPOJNICA M16X1.5-M22X1.5	627.13.215	15952	2
12	UVLAKAČ SPOJNICE M16x1,5	628.02.230	65012	4
13	ZABRAVLJIVAČ (Ø30; L=110) - Z.S.	618.08.360	61105	1
14	ZABRAVLJIVAČ (Ø25) - Z.S.	618.08.357	61104	3
15	PODLOŠKA B12	021.22.005	72	4
16	MAZALICA AM 8X1	020.16.001	5808	1
17	PRIKLJUČAK MULČARA - Z.S.	618.09.510	92120	1
18	ČAURA BK090 8060	000.00.000	64282	2
19	LIM NOSAČA RUKE	618.09.494	92100	1
20	PODLOŠKA B18	021.22.005	58969	2
21	VIJAK M18x50	020.00.001	39318	2
22	PODLOŠKA	618.09.522	92477	2
23	PODLOŠKA B24	021.20.001	7950	2
24	NAVRTKA M24-6H	020.06.011	56771	2
25	OSOVINA PRIKLJUČKA - Z.S.	618.08.531	62279	2
26	HID. CREVO 2SC DN08 M16x1,5	000.00.000	64274	2
27	SPOJNICA HIDROCILINDRA M16x1,5	000.00.000	64277	4
28	HIDROCILINDAR DVOSM. DEJSTVA 25/50	618.08.331	60973	1
29	GRANIČNIK RUKE PRO	618.09.032	64606	1
30	CEV RUKE MULČARA - DESNA - Z.S.	618.09.501	92127	1
31	VIJAK M8 x 20-6g DIN 914	020.02.008	42211	2
32	OSOVINICA CEVI	618.08.539	62287	2
33	OSIGURAČ-R 5X80	501.10.578	038087	2
34	MAZALICA AM6	020.16.001	2392	7
35	PODLOŠKA A12	021.20.001	66	4
36	VIJAK M12X 22-6g	020.00.001	21329	4
37	CEV RUKE MULČARA - Z.S.	618.09.499	92126	1
38	ČAURA HIDROCILINDRA - PRO	618.09.673	94608	1

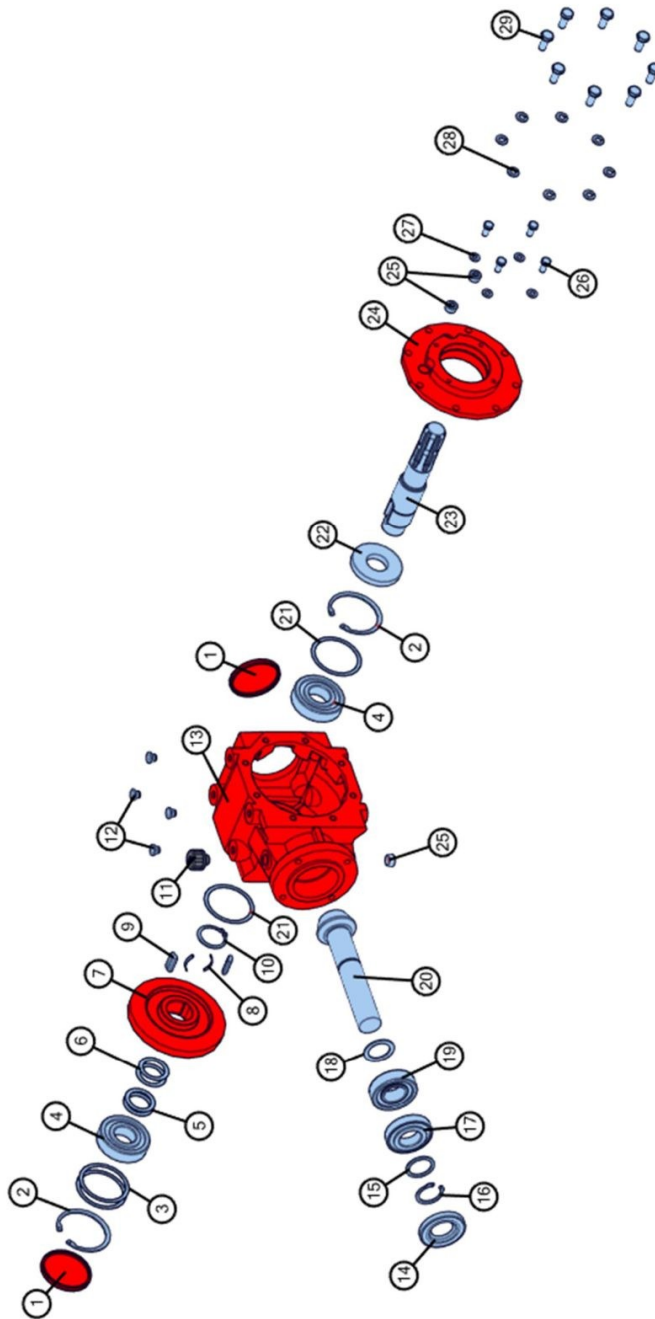
Tabela 2



Slika 3

No.	Naziv	Oznaka	Ident	Količina
1	REMEN XPB 1250	000.00.000	63750	4
2	VIJAK M 6x20	020.00.001	7799	12
3	PODLOŠKA B6	021.22.005	69	12
4	ZAŠTITA FPM - Z.S.	618.08.825	93317	1
5	PODLOŠKA MULČARI 8064931	618.07.283	40355	1
6	CREVO MAZALICE 3178795	618.07.286	40352	1
7	VIJAK SPECIJALNI 8064930	618.07.288	40354	1
8	MULTIPLIKATOR-T311 SS (Ø35) - M.S.	618.09.615	93318	1
9	PODLOŠKA B12	021.22.005	72	4
10	VIJAK M12 x 30	020.00.001	4570	4
11	ZAŠTITNIK KARD. VRATILA - VEĆI	000.00.000	59034	1
12	PODLOŠKA A8	021.20.001	65	4
13	VIJAK M 8x 18-6g	020.00.001	2544	4
14	POKLOPAC KARDANSKOG VRATILA	627.15.130	37132	1
15	ELASTIČNI VEZNI ELEMENT 50x80	618.07.210	40346	1
16	REMENICA SPB BK0180480	000.00.000	65678	1
17	REMENICA SPB BK0130480	000.00.000	65677	1
18	NOSAČ MULTIPLIKATORA - Z.S.	618.08.820	93301	1
19	SAVIJENA ZAŠTITA FPM - Z.S.	618.08.832	93341	1

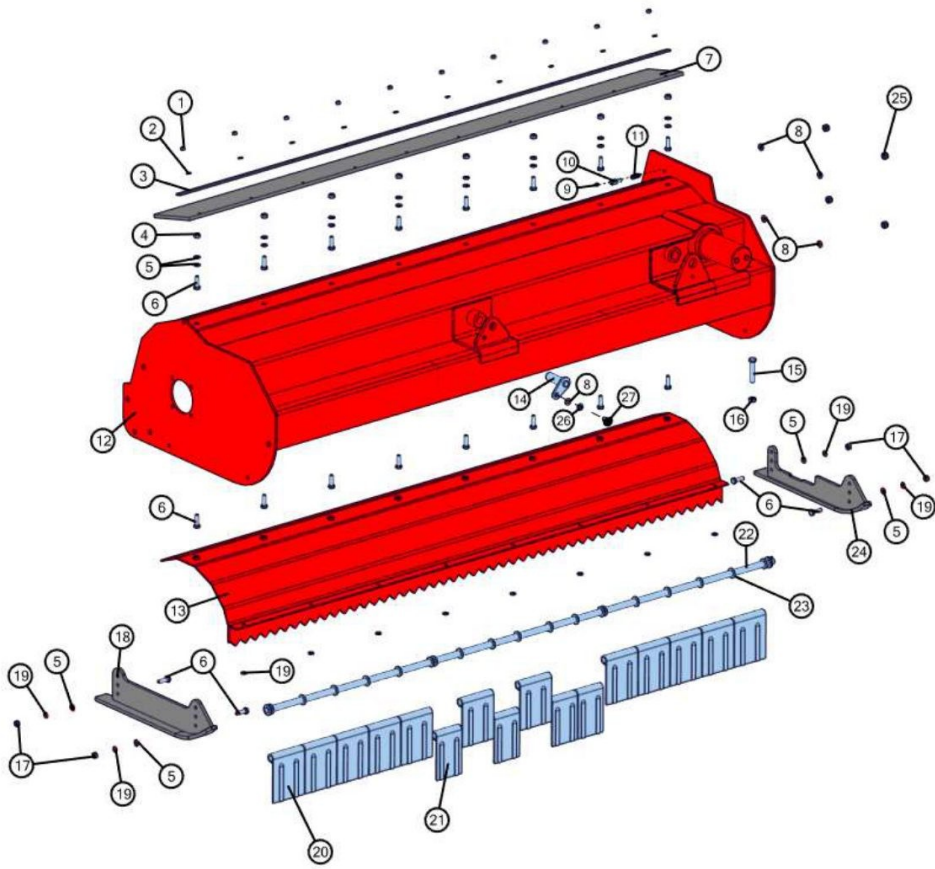
Tabela 3



Slika 4

No.	Naziv	Oznaka	Ident	Količina
1	POKLOPAC ULJA 80 x 10	618.07.258	47617	2
2	USKOČNIK 80	021.23.005	6324	2
3	PODLOŠKA 69X79.9X0.2	618.07.943	58260	2
4	LEŽAJ 6307 35 X 80 X 21	020.31.001	6309	2
5	PODLOŠKA 35.3X48X0.6	618.07.252	58257	2
6	PODLOŠKA 35.3X48X0.2	618.07.251	58256	2
7	POGONSKI ZUPČANIK - SUPROTNOSMERNI	618.09.816	95725	1
8	OPRUGA SPOJNICE COMER T-311 A	618.07.259	47618	2
9	KLIN SPOJNICE	618.07.253	47492	2
10	USKOČNIK 42	021.23.002	11254	1
11	ODUŠAK TSSR3 M18x1,5-CON HEAD	020.03.007	42597	1
12	PLASTIČNI ČEP M12 x 1,5	000.00.000	101478	4
13	KUČIŠTE MULTIPLIKATORA-odlivak	618.07.237	47320	1
14	SEMERING 619.81.043	023.83.002	27438	1
15	DISTANTNA PODLOŠKA	619.81.016	27442	1
16	USKOČNIK 612.04.319 35 x 2.5	D021.23.002	13116	1
17	LEŽAJ 30207 - 35 X 72 X 18.25 - 627.15.078	022.31.046	7772	1
18	PODMETAČ 35 x 48 x 2	618.10.451	111063	1
19	LEŽAJ 32207 35 x 72 x 24,25	022.31.048	47614	1
20	GONJENI ZUPČANIK (fi 35)	618.08.596	62689	1
21	PODLOŠKA 69X79.9X0.6	618.07.249	47610	2
22	SEMERING 35 X 80 X 10	023.83.001	42835	1
23	POGONSKO VRATILO - SUPROTNOSMERNO	618.08.800	63756	1
24	POKLOPAC KUČIŠTA MULTIPLIKATORA T-311 A	618.07.247	47609	1
25	KONUSNI ČEP	627.14.455	24568	3
26	VIJAK M 8x 18-6g	020.00.001	2544	4
27	PODLOŠKA A8	021.20.001	65	4
28	PODLOŠKA B10	021.22.005	71	8
29	VIJAK M10x25	020.00.001	2191	8

Tabela 4



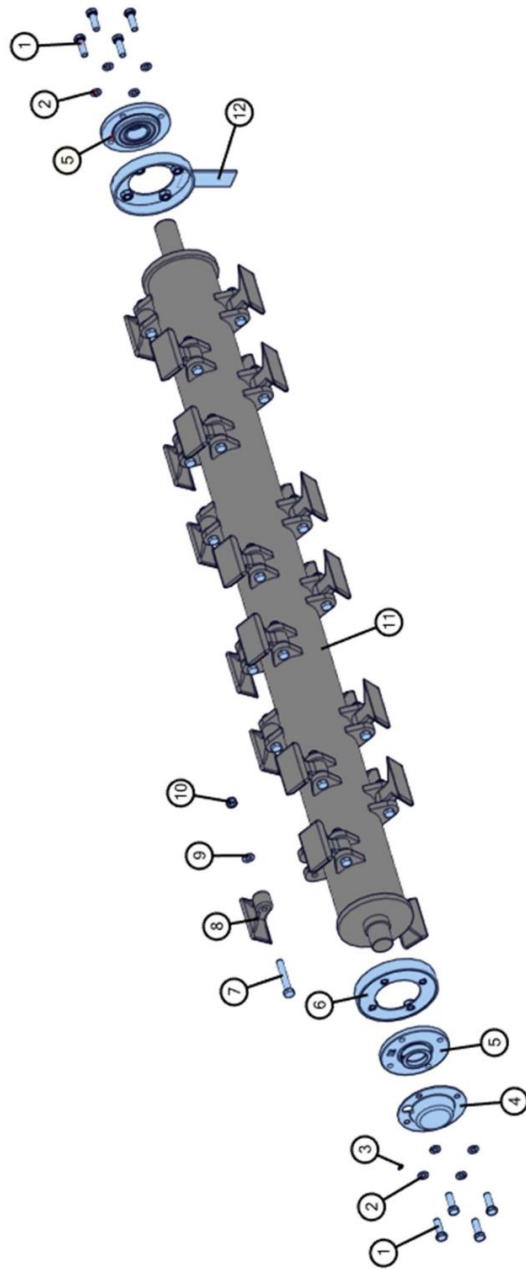
Slika 5

No.	Naziv	Oznaka	Ident	Količina
1	NAVRTKA M 8-6H	020.06.011	2444	10
1*	NAVRTKA M 8-6H	020.06.011	2444	8
1**	NAVRTKA M 8-6H	020.06.011	2444	7
2	PODLOŠKA A8	021.20.001	65	10
2*	PODLOŠKA A8	021.20.001	65	8
2**	PODLOŠKA A8	021.20.001	65	7
3	TRAKA GUME 2 m	618.09.519	92455	1
3*	TRAKA GUME 1,6 m	618.09.423	91469	1
3**	TRAKA GUME 1,8 m	618.09.518	92454	1
4	NAVRTKA M10-6H	020.06.011	2208	8
4*	NAVRTKA M10-6H	020.06.011	2208	6
4**	NAVRTKA M10-6H	020.06.011	2208	7
5	PODLOŠKA A10	021.20.001	2493	20
5*	PODLOŠKA A10	021.20.001	2493	16
5**	PODLOŠKA A10	021.20.001	2493	18
6	VIJAK M10x35 JUS 053	020.00.001	12881	20
6*	VIJAK M10x35 JUS 053	020.00.001	12881	16
6**	VIJAK M10x35 JUS 053	020.00.001	12881	18
7	GUMA MULČARA 2 m	618.08.637	62831	1
7*	GUMA MULČARA 1,6 m	618.08.636	62830	1
7**	GUMA MULČARA 1,8 m	618.08.941	64064	1
8	PODLOŠKA A12	021.20.001	66	5
9	SPOLJNI DEO MAZALICE	618.07.284	40351	1
10	NASTAVAK M10 - M10	618.09.542	92593	1
11	UNUTRAŠNJI DEO MAZALICE	618.07.287	40353	1
12	BOČNI MULČAR 2m PRO - Z.S.	618.09.870	96045	1
12*	BOČNI MULČAR 1,6m PRO-Z.S.	618.10.496	111224	1
12**	BOČNI MULČAR 1,8m PRO-Z.S.	618.10.285	100769	1
13	UNUTRAŠNJI PLAŠT 2 m - Z.S.	618.09.514	92441	1
13*	UNUTRAŠNJI PLAŠT 1,6m- Z.S.	618.10.500	111228	1
13**	UNUTRAŠNJI PLAŠT 1,8m- Z.S.	618.10.287	100773	1
14	ZABRAVLJIVAČ (Ø25) - Z.S.	618.08.357	61104	1
15	VIJAK M12 x 70 JUS 053	020.00.001	7914	1
16	NAVRTKA M12-6H	020.06.010	62	1
17	NAVRTKA M10-6H	020.06.010	61	4
18	SAONIK BM DESNI - Z.S.	618.10.115	98609	1
19	PODLOŠKA B10	021.22.005	71	12
20	ZAŠTITNI LIM (L=125)	618.08.502	62071	12
20*	ZAŠTITNI LIM (L=125)	618.08.502	62071	12
20**	ZAŠTITNI LIM (L=125)	618.08.502	62071	12
21	ZAŠTITNI LIM (L=100)	618.08.503	62073	4
21*	ZAŠTITNI LIM (L=100)	618.08.503	62073	0
21**	ZAŠTITNI LIM (L=100)	618.08.503	62073	2
22	ŠIPKA 2 m - Z.S.	618.08.549	62441	1
22*	ŠIPKA 1,6 m - Z.S.	618.10.192	97784	1
22**	ŠIPKA 1,8 m - Z.S.	618.09.493	92085	1
23	PODLOŠKA A16	021.20.001	68	19
23*	PODLOŠKA A16	021.20.001	68	15
23**	PODLOŠKA A16	021.20.001	68	17
24	SAONIK BM LEVI - Z.S.	618.10.116	98610	1
25	NAVRTKA M12 JUS M.B1.622	020.07.005	04671	4
26	PODLOŠKA B12	021.22.005	72	1
27	VIJAK M12X 22-6g	020.00.001	21329	1

*BM 160 PRO

*BM 180 PRO

Tabela 5



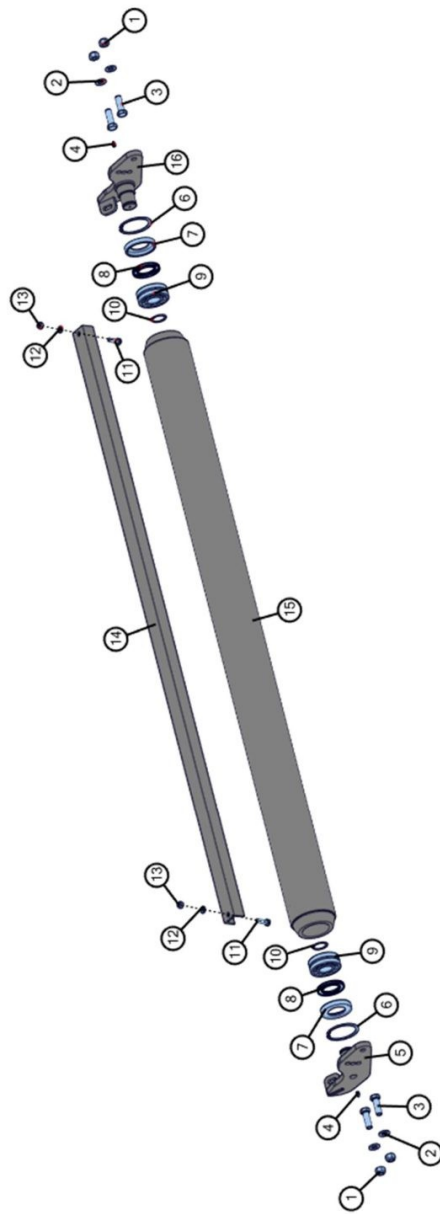
Slika 6

No.	Naziv	Oznaka	Ident	Količina
1	VIJAK M14x45	020.00.001	38497	8
2	PODLOŠKA B14	021.22.005	20783	8
3	Mazalica AM6	020.16.001	2392	1
4	BOČNI POKLOPAC ESFCE 210	618.09.007	64341	1
5	LEŽAJ ESFCE 210 SNR	022.31.001	63748	2
6	ZAŠTITA ROTORA - DESNA - Z.S.	618.09.018	64492	1
7	VIJAK M14x90-6g	020.00.001	63479	24
7*	VIJAK M14x90-6g	020.00.001	63479	20
7**	VIJAK M14x90-6g	020.00.001	63479	22
8	ČEKIĆ NOŽ SH1	000.00.000	62966	24
8*	ČEKIĆ NOŽ SH1	000.00.000	62966	20
8**	ČEKIĆ NOŽ SH1	000.00.000	62966	22
9	PODLOŠKA A14	021.20.001	67	24
9*	PODLOŠKA A14	021.20.001	67	20
9**	PODLOŠKA A14	021.20.001	67	22
10	NAVRTKA M14x1.5	020.06.011	63034	24
10*	NAVRTKA M14x1.5	020.06.011	63034	20
10**	NAVRTKA M14x1.5	020.06.011	63034	22
11	ROTOR SH (L=2 m) - Z.S.	618.08.588	62674	1
11*	ROTOR SH (L=1,6 m) - Z.S.	618.08.586	62672	1
11**	ROTOR SH (L=1,8 m) - Z.S.	618.08.587	62673	1
12	ZAŠTITA ROTORA - LEVA - Z.S.	618.09.019	64493	1

*BM 160 PRO

*BM 180 PRO

Tabela 6



Slika 7

No.	Naziv	Oznaka	Ident	Količina
1	NAVRTKA M16-6H	020.06.011	23131	4
2	PODLOŠKA A16	021.20.001	68	4
3	VIJAK M16x50	020.00.001	10973	4
4	MAZALICA AM 8X1	020.16.001	5808	2
5	RUKAVAC VALJKA BM DESNI - Z.S.	618.09.852	96016	1
6	USKOČNIK 90	021.23.005	19503	2
7	ZAŠTITA SEMERINGA 50 x 80	618.09.357	91418	2
8	SEMERING SC 50X80X8	023.83.002	59505	2
9	LEŽAJ 22308 40X 90X33	022.31.045	7820	2
10	USKOČNIK 40	021.23.002	13106	2
11	VIJAK M10x35 JUS 053	020.00.001	12881	2
12	PODLOŠKA A10	021.20.001	2493	2
13	NAVRTKA M10-6H	020.06.011	2208	2
14	ČISTAČ BM 200	618.09.858	96014	1
14*	ČISTAČ BM 160	618.09.857	96021	1
14**	ČISTAČ BM 180	618.09.859	96022	1
15	VALJAK BM 2 - Z.S.	618.09.415	91436	1
15*	VALJAK BM1,6 - Z.S.	618.09.395	91433	1
15**	VALJAK BM 1,8 - Z.S.	618.09.355	91411	1
16	RUKAVAC VALJKA BM LEVI - Z.S.	618.09.853	96017	1

*BM 160 PRO

*BM 180 PRO

Tabela 7