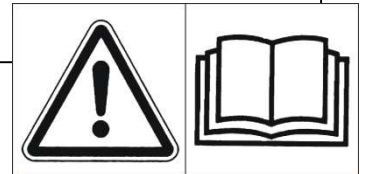




# OFFSET MULCHERS

**BM 160 PRO (FPM 618.279)**  
**BM 180 PRO (FPM 618.212)**  
**BM 200 PRO (FPM 618.190)**

№ 93449



**ASSEMBLY / HANDLING /  
MAINTENANCE  
LIST OF SPARE PARTS**

• e-mail: [info@fpm.rs](mailto:info@fpm.rs)

**SERBIA**

• Internet: [www.fpm.rs](http://www.fpm.rs)

**WARNING TO YOU, THE USER**

By purchasing this tool you have made a wise choice. It is the result of many years of thinking, research and improvement. And you, like thousands of other users, will realize that you own the best that technology could create,

knowledge and field testing. You have bought a reliable tool, but only if you use it correctly, you can expect good performance and a long working life.

This manual provides all the information you need to get the most out of your tool. That performance depends a lot on how carefully you read this manual and apply that knowledge. It's a simple tool, but flaws that are obvious can often be overlooked and show up in poor performance, which often occurs because you've neglected the natural wear and tear of parts or because your tool isn't set up properly. Therefore, do not assume that you know how to use and maintain the tool before reading this manual, which you should always have at hand.

Our service representatives or sales service centers with their trained staff can offer you all the original parts of small plant residues - mulchers (for use in fruit growing and viticulture) for servicing. These parts are manufactured and carefully inspected in the same factory where the trinket itself is made, to ensure high quality and accurate assembly with every replacement.

### **TRACTOR CHIPS OF PLANT RESIDUES - MULCHERS PRODUCTS: FPM AGROMEHANIKA DOO BOLJEVAC**

**Tractor shredders of plant residues meet the criteria prescribed by the Law on Standardization and the Rulebook on Machinery Safety (Official Gazette of the Republic of Serbia, No. 21/2020, valid from 06.03.2020), especially in terms of stability and protection of parts and assemblies that could endanger the operator's safety due to their function and shape.**

**IMPROVEMENT: FPM Agromehanika DOO constantly strives to improve its products and therefore reserves the right to make changes or improvements when necessary, without any obligation to change or supplement previously manufactured or sold equipment.**

Podaci u ovom priručniku tačni su na dan izdavanja.

All rights to press and images are reserved by:  
FPM AGROMEHANIKA DOO BOLJEVAC

AN INTEGRAL PART OF THE HANDLING AND MAINTENANCE INSTRUCTIONS IS THE DECLARATION OF CONFORMITY 98/37/EC WITH THE SAFETY REQUIREMENTS ESTABLISHED BY THE EUROPEAN DIRECTIVE.



*Issued by: FPM Agromehanika DOO Boljevac*  
*Year: 2022*

Warnings for you, the user; Personal safety _____	3
Warranty limitations _____	4
Warning labels _____	5
Description of tools _____	7
Safety _____	8
Specification of technical characteristics _____	11
Transportation of fine plant residues; Aggregation procedure on the tractor _____	12
Working with small plant residues _____	13
Useful tips _____	14
Maintenance _____	16
Declaration of Conformity 98/37/CE _____	19
List of spare parts _____	20

## WARNING TO YOU, THE USER

**It is very important that the cardan shaft that you connect to your shredder - mulcher has the prescribed dimensions.**

**With that, you need to get a cardan shaft with the following characteristics.**

- Grooving 35 JUS M.L1.601 on both ends of the cardan shaft
- Shaft with one-way coupling F5/1R - right



**IMPORTANT:** If you do not comply with the aforementioned warning, the factory is not responsible for damage or breakages to the tractor, cardan shaft or small plant residue shredder - mulcher.

**WE WISH YOU HAPPY WORK!**

## READ CAREFULLY!

**In this manual and on the tool you will find warning labels - "CAUTION" "CAUTION" and "DANGER". The warnings are intended to draw your attention to personal caution and the caution of those working with you as they should read it as well.**

### PERSONAL SAFETY

**CAUTION:** This word "CAUTION" is used where care is required to protect the operator and others from an accident.

**CAUTION:** This word "CAUTION" indicates the possibility of serious injury to operators and personnel that may occur suddenly. It is a word often used as a warning to the operator and others to prevent surprises when using the mower.

**DANGER:** This word "DANGER" means what must not be done, because it involves risk.

**BEHIND THE ADDITIONAL WARNINGS SUCH AS "WARNING" AND "IMPORTANT" ARE SPECIAL INSTRUCTIONS REGARDING THE SAFETY OF THE TRACTOR CHIPS OF PLANT RESIDUES - MULCH.**

## SECURITY OF THE TRACTOR CUTTER OF PLANT RESIDUES

**WARNING: THIS WARNING DRAWS THE OPERATOR'S ATTENTION TO THE POSSIBILITY OF DAMAGE TO THE trinket IF SOME INSTRUCTIONS ARE NOT FOLLOWED.**

**IMPORTANT: THE READER IS INFORMED OF SOMETHING THEY SHOULD KNOW TO PREVENT MINOR FAILURES ON A LITTLE THING, IN CASE THEY MISS IT.**

**WARNING!**

**FAILURE TO OBEY THE ABOVE "CAUTION", "CAUTION" AND "DANGER" WARNINGS COULD RESULT IN SERIOUS PERSONAL INJURY.**

### LIMITATIONS OF WARRANTY

The factory provides a guarantee in accordance with the Law on Standardization and the Rulebook on Machine Safety (Official Gazette of the Republic of Serbia, No. 21/2020, valid from 06.03.2020), for each original piece of trinkets delivered to the user by the sales network FPM Agromehanika DOO Boljevac guarantees that at the time of delivery every such part of the shredder is new, without defects in materials and workmanship, and that the rotary shredder is guaranteed for a period of one year from the date of delivery to the end user, provided that the machine is used and serviced in accordance with the recommendations from this INSTRUCTIONS for handling and maintenance.

### EXCEPTIONS:

1. Parts made of wood are not covered by the warranty.
2. Parts that were not produced by FPM Agromehanika DOO Boljevac (tires, plastics, belts, PTO shaft, PTO guard, hydraulic cylinder with connecting hoses, etc.) are not covered by this warranty, but by the manufacturer's warranty.
3. Parts that are normally worn out in operation, namely: rotors, cutting knives, cutting knife holders, slides under the sides of the shredder.
4. This warranty is void in the event of misuse, improper or careless use, or accidental damage. The warranty ceases to be valid due to the use of non-original parts, and the factory is not responsible for damages caused during transport.

THE FACTORY IS NOT RESPONSIBLE FOR LOSS OF PROFITS DUE TO LITTLE FAILURE OF PLANT REMAINS OR INJURY TO THIRD PARTIES, NOR FOR ADDITIONAL COSTS OF WORK FOR REMOVING AND REPLACEMENT OF PARTS.

The customer is responsible and bears the costs of the following:

1. normal maintenance, such as lubrication, topping up oil, minor adjustment and the like,
2. transportation of fine plant residues to the place where the service is performed within the warranty period and back,
3. travel time of the authorized service to the owner of the shredder and back, or delivery and return of the shredder from the service workshop after repair.

This warranty does not apply to plant residue shredders that have been altered or modified without our express permission or performed by someone else, outside of an authorized service center.

The guarantee is linked to strict adherence to the warning:

- all instructions from this manual must be followed and all guards regularly inspected and replaced, as necessary.

No warranty is given for products that are not new.

Persons who only work in our factory are not official representatives of the factory and do not have the right to undertake any obligations on its behalf.

No warranty covers product equipment beyond that provided, and the factory is not responsible for injuries resulting from such use.

### WARNING LABELS

The following warning labels are placed on your trinket for your safety and the safety of the people working with you. With this manual in hand, walk around the machine and check those warning labels and manual instructions. Labels must be legible, if not replace them.

The identification of small plant residues is done through an identification plate that contains the following marks:

- In the field with the letter "Z" - the number of the certificate (document) on occupational safety is entered.
- In the "MASS/WEIGHT" field - the weight of the product is entered.
- In the "YEAR" field - year of production (last two digits).
- In the »SERIES/TYPE« field - series designation and commercial designation of the product.
- In the "№" field, the number of the small plant residue is entered, which is made up of 9 digits and has the following meaning:
  - first digit - year of production
  - second and third - manufacturer's code
  - the other six digits - the serial number of the product in production



Photo 1.

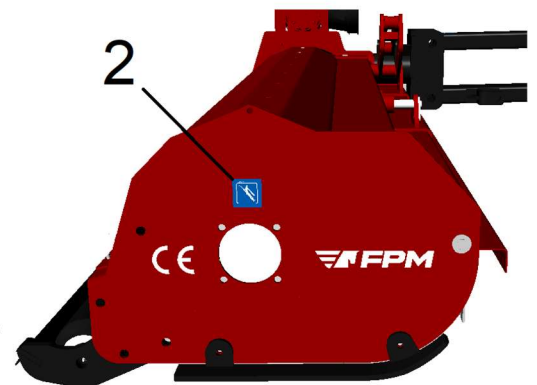


Photo 2.

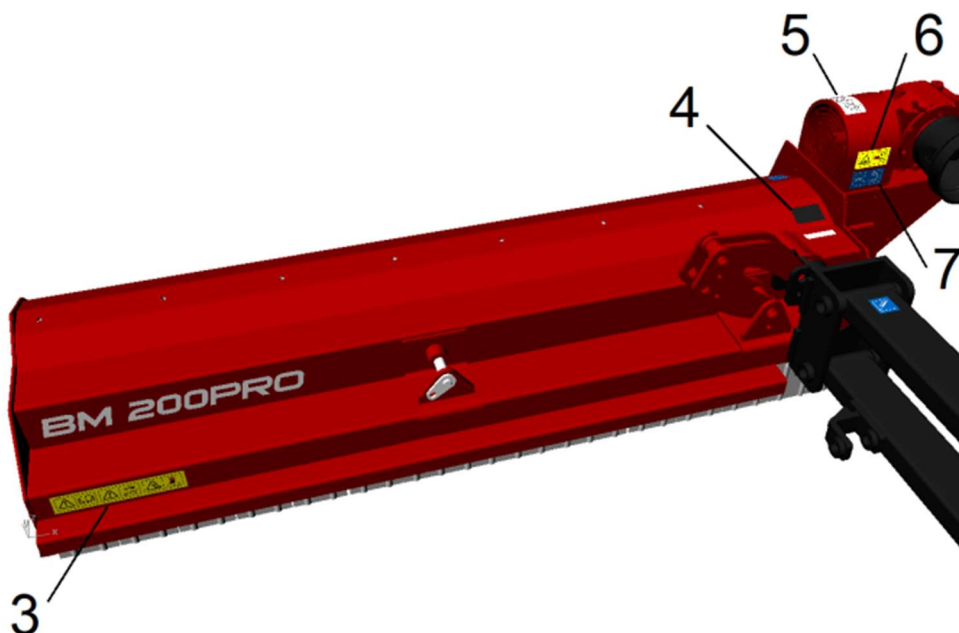



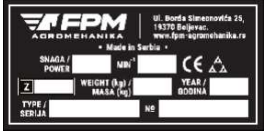
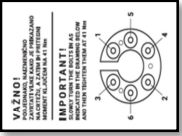




Photo 3.

WARNING LABELS

	STICKER	Description
1.		Rotating elements! Protect feet and hands from rotating elements. There is a possibility of throwing objects from the ground onto objects and persons. Other persons must stand at a safe distance from the machine.
2.		The place where the grease gun is located! Mandatory, daily, lubrication before the beginning of work.
3.		Before working with the machine, read the manual carefully. During any adjustment, lubrication or cleaning of the implement, turn off the tractor and wait for all moving parts to stop.
4.		Identification plate
5.		Evenly, alternately screw the screws as shown in the drawing. Tighten the torque with a wrench to 41 Nm
6.		Rotating elements! Protect feet and hands from rotating elements. Other persons must stand at a safe distance from the machine.
7.		The number of revolutions of the output shaft on the tractor.

**ATTENTION: THIS TRIANGLE SYMBOL IS USED WHEREVER YOUR SAFETY, THE SAFETY OF OTHERS, AND TO KEEP YOUR LITTER OF PLANT RESIDUES PROTECTED FROM RISK IS REQUIRED. THEREFORE, CAREFULLY READ THE WARNING WHICH MENTIONS THESE SIGNS.**



## INFORMATION FOR CORRECT READING OF THE INSTRUCTIONS

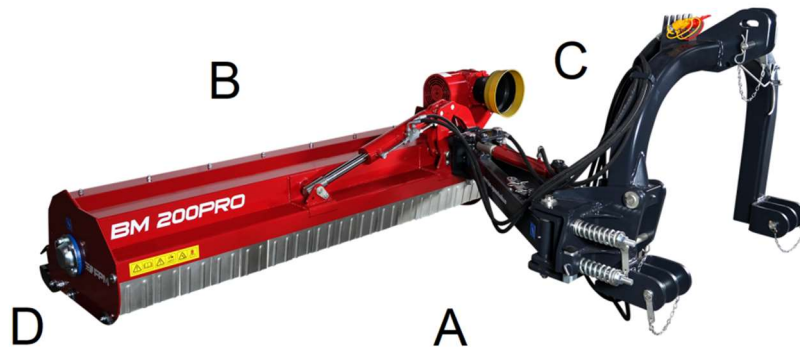
In this manual, "left" and "right" are defined when looking in the direction of travel.

A - Front  
B - Back  
C - Left side  
D - Right side  
(labels are given in Figure 1)

Metric thread is used for assembly.  
Tighten all screws during assembly.

In each picture, letters are used to show where the installation should be done.

Read the text carefully in order to mount the small item correctly.



## DESCRIPTION OF THE TOOL

### SIDE CUTTERS OF PLANT RESIDUES - MULCHERS:

- BM 160 (FPM 618.192), BM 180 (FPM 618.193), BM 200 (FPM 618.194) working reach 1.6 / 1.8 and 2.0 m represent a group of tools for the widest application for mechanical crushing of plant residues on all agricultural, communal and other uncultivated surfaces. It is used for shredding grass, plant residues, for work by roadsides, in canals, etc., then for shredding branches in orchards, residues after pruning vines in vineyards, cornfields...

This improves the quality, natural fertility of the soil and reduces the need for artificial fertilizers.

The construction solution is quite robust, adapted to intensive work and has the possibility of mechanical lateral movement.

We hang a standard shredder of plant residues - a mulcher on the back of the tractor.

In difficult working conditions, the use of hammer knives is recommended, and in lighter working conditions, universal knives (Y - type) are used for shredding grass and other plant residues.

The double-spiral rotor with a 45° distribution of working bodies, which is installed in these models, consumes much less energy, so less tractor power is required, and the load on the vital parts of the shredder is much less.

The multiplier (for 540 °/min) has a built-in one-way coupling.

The possibility of hitching in three points: category I and II and the possibility of lateral movement in relation to the axis of the tractor.

Standard equipment includes front safety guards (curtains), height-adjustable roller, choice of working bodies - hammer or universal (Y) knife.

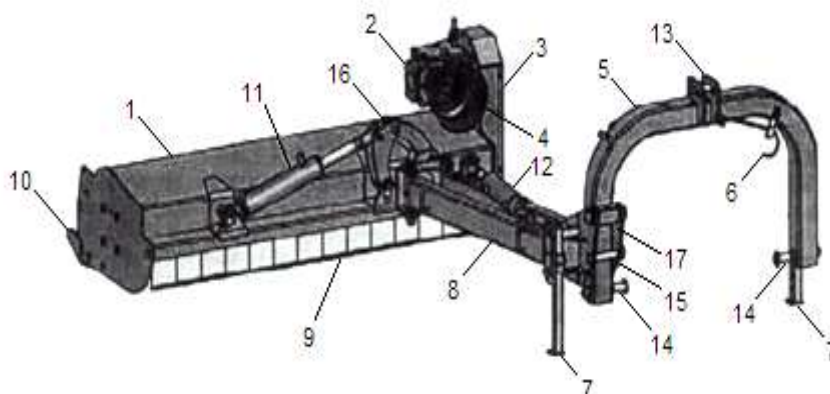


PHOTO  
6.

## DELOVI SITNILICE BILJNIH OSTATAKA

1. Carrying frame (housing) of the mulcher
2. Multiplier
3. Lateral belt transmission
4. Cardan shaft protector
5. Attachment frame of the mulcher
6. Cardan shaft holder
7. Rate
8. Connecting frame support
9. Protective curtains Valjak
10. Hydraulic cylinder of the mulcher
11. Hand hydraulic cylinder
12. Third connection point
13. Connection point
14. Fuse
15. Rotating mechanism
16. Connecting frame connection



- ⚠ The majority of accidents occur during operation, maintenance and transport, which are the result of non-observance of basic safety requirements. For the operation and maintenance of the tool, whether you work alone, with family members or other people, be sure to read and follow the basic procedures for working with the tool. In addition, stickers with warnings are placed on the trinkets, which should draw attention to the mandatory observance of safety.- Navedena uputstva za rukovanje, održavanje i sigurnost pri radu moraju se bezuslovno poštovati, da bi ste osigurali bezbedan i siguran rad sa sitnilicom.
- ⚠ Before starting work, the operator must be absolutely familiar with the functioning of all parts of the machine, during work it may be too late. First of all, learn to turn off the trinket quickly and safely, in the event of an emergency.
- ⚠ The instructions for handling and maintenance must be kept for the intended life of the small item.
- ⚠ The metal nameplate must always be legible, visible and clean.
- ⚠ When attaching or detaching the shredder from the tractor, always move the support foot to the appropriate position (safety).
- ⚠ The implement must be aggregated on tractors with adequate engine power.
- ⚠ Be especially careful when unhooking or hooking the small tractor to the tractor, because the area around the lifting arms is a dangerous zone.
- ⚠ Pay attention to the permissible axle load and total weight. Due to the weight, there is a different redistribution of the load na osovinama točkova. - Due to driving safety requirements, use a tractor with a cab. Keep all windows closed during work.
- ⚠ Before starting the machine, and for a very short distance, always move it and secure it in its transport position. Pay attention to the permitted dimensions during transport.
- ⚠ Before you start driving on public roads, be sure to secure your small item for safe driving and respect the rules of behavior in public traffic.
- ⚠ When required by special circumstances, use light signals to indicate danger if it is not prohibited by traffic rules. - Never transport other people on the tractor or tractor during operation or transport.
- ⚠ Never transport small items unfastened and secured for safe driving.
- ⚠ Never drive a small car that is switched on.- Nikada ne uključujte priključno vratilo traktora dok je sitnilica u transportnom položaju. - Never leave the driver's seat while the tractor is in operation.

- ⚠ Every time before using the shredder, check whether all parts (nuts, screws, etc.) are sufficiently tightened, especially fix the blades on the rotor.
- ⚠ Knives on the rotor and parts used for their fastening (nuts, screws, etc.) if they are worn or damaged, immediately replace them with original parts of FPM AGROMEHANIKA DOO BOLJEVAC.
- ⚠ Before you start adjusting, greasing or cleaning the trinket, stop the tractor engine, remove the ignition key, turn off the PTO shaft and apply the parking brake of the tractor.
- ⚠ Wait for the rotating parts to stop before approaching the item.
- ⚠ Never wear loose clothing that can be caught by the rotating parts of the grinder. Clothing should be close to the body. Use protective equipment, goggles, gloves and safety shoes, especially when working on rocky ground.
- ⚠ The operator must be absolutely sure that there are no persons or animals in the area of work with the trinket before starting the trinket and starting work. You should always think about the consequences of irresponsible work, because they are irreparable.
- ⚠ Remove foreign objects from the plot before starting work.
- ⚠ **IMPORTANT:** In addition to roads, footpaths, public areas (parks, schools, etc.) and on stony ground, work with special care and with the provision of conditions, in order to avoid the risk of accidents due to the throwing of parts on objects and persons.
- ⚠ Never work in reverse.
- ⚠ It is absolutely forbidden to drive a trifle by an inexperienced person, a person who does not have a driver's license or a person who does not have adequate psycho-physical characteristics.
- ⚠ It is necessary that after the end of the season of working with the sledgehammer, the authorized service technician inspects your sledgehammer, puts it in proper condition, especially the blades on the rotor, and tightens all parts (screws, nuts, etc.) with the exact prescribed tightening torque.



**THE ABOVE WARNINGS MUST NEVER BE IGNORED**



**SECURITY**



### **ATTACHMENT OF THE MACHINE TO THE TRACTOR**

- ⚠ Before each attachment and detachment of the implement to the tractor, block the hydraulic controls to prevent any inadvertent raising or lowering.
- ⚠ When attaching, pay attention to the category of the tractor and the connection levers of the shredder, they must be adjusted.
- ⚠ The zone around the connection points is very dangerous. There is a risk of injury when attaching the connecting rods.
- ⚠ When using external controls for hydraulics, you must not stand between the tractor and the shredder. - In the transport position of the shredder, always take care and block the lateral movement of the connection levers.- When driving on public roads with the shredder in the transport position, the hydraulic controls of the tractor must be blocked against accidental lowering.

- ⚠ Do not use the grinder for work on uneven terrain.



**THE ABOVE WARNINGS MUST NEVER BE IGNORED**



**SECURITY**



### **USE OF PTO SHAFT**

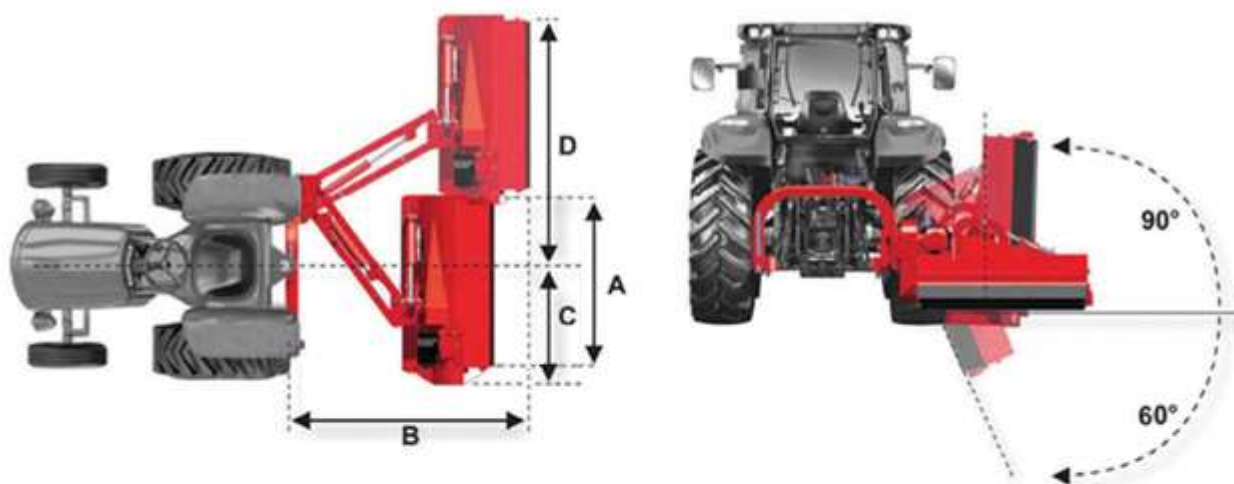
- ⚠ It is allowed to use only those cardans that were delivered with the device or prescribed by the manufacturer of the device.
- ⚠ Cardan covers must be installed and in the prescribed condition.
- ⚠ Pay attention to the prescribed folding of the pipe in the transport and working position.
- ⚠ Attaching and removing the cardan shaft must only be done when the output shaft of the tractor is turned off, the engine is turned off and the ignition keys are removed.
- ⚠ The angle at which the cardan works must be the smallest possible, thus ensuring a long working life of both the cardan shaft and the tool.
- ⚠ Always mount the cardan shaft correctly.
- ⚠ With special care, fasten the gimbal guard with the chains installed for that purpose (the gimbal guard must not rotate), be sure to read the instructions provided with the gimbal. If the protection is damaged, immediately replace it with a new one.
- ⚠ When you're not using the grinder, hook the cardan with the cardan shaft holder
- ⚠ If you are not sure how the cardan works, if it is without protection, if the protection is used or broken, you must replace the cardan with a new one that bears the "CE" mark.
- ⚠ Before turning on the output shaft of the tractor, check whether the selected number of revolutions and the direction of rotation are adapted to the permitted number of revolutions and the direction of rotation of the shredder.
- ⚠ Before turning on the output shaft of the tractor, make sure that no persons or animals are in the danger zone of the chipper.
- ⚠ Do not engage the output shaft while the tractor engine is off.
- ⚠ If the cardan shaft is damaged, rectify the fault immediately, it is best to contact the nearest service center. Any unprofessional intervention leads to an imbalance of the cardan, which can lead to deterioration of the operation or damage to the shredder or the output shaft of the tractor.



**THE ABOVE WARNINGS MUST NEVER BE IGNORED**

## SPECIFICATION OF TECHNICAL CHARACTERISTICS

BM 160 PRO	1,6	2,1	33 (45)	II, III	540	159	4	20	60	3-12	✓	680	
BM 180 PRO	1,8	2,3	35 (50)	II, III	540	159	4	22	66	3-12	✓	720	
BM 200 PRO	2	2,5	53 (70)	II, III	540	159	4	24	72	3-12	✓	770	



	A	B	C	D
BM 160 PRO	160	240	29	274
BM 180 PRO	180	240	29	294
BM 200 PRO	200	240	29	314

## TRANSPORT OF MULCHER



**DANGER:** If small items are transported on public roads, be sure to secure them for safe driving and respect the rules of behavior in public traffic.  
The tool must be raised at least 40 cm from the ground.

If the MULCHER is transported by truck or rail, you should study the "SPECIFICATION OF TECHNICAL CHARACTERISTICS" where weights and dimensions are given.

## THE AGGREGATION PROCEDURE ON THE TRACTOR

### WORK BEFORE USE



#### **ATTENTION:**

**Attaching a tractor to a tractor can be a very dangerous operation.**  
**Pay special attention and strictly follow the given instructions.**

**Proceed as follows:**

- Use a tractor whose configuration can meet the needs of the shredder.
  - Make sure that there are no objects, people or animals near the implement and that the tractor's drive shaft is switched off.
  - Make sure the tool is in a stable, horizontal position.
  - Slowly place the tractor at an angle of 90° in relation to the implement, using the hydraulic lever lower the lower tractor levers to the height of the axis of the connection points of the shredder and turn off the tractor.
- IMPORTANT:** If the tractor is misaligned, it is much easier to drive the tractor back and forth again than it is to try to get the implement to the tractor linkages using your own labor.

- Install the cardan shaft, first in the splined shaft on the implement, and the other end on the output shaft of the tractor. The shaft must be secured with existing fuses in that position.
- When the cardan shaft is maximally extended in working conditions, the telescopic tubes must overlap by at least 1/3 of the length (A in Figure 7).
- When the cardan shaft is maximally retracted, there must be a gap of 4 cm (B, picture 7).

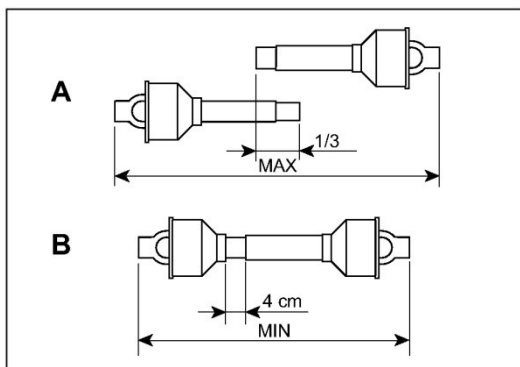


Photo 7.

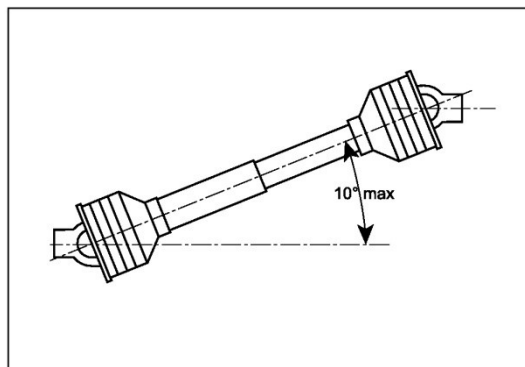


Photo 8.

- Attach the left lower tractor link to the left arm of the implement and secure it with the existing studs.
- Attach the right lower tractor link to the right arm of the implement and secure it with the existing pins.
- Secure the left and right lower tractor link with appropriate chains so that they are parallel to the tractor. This is done to limit the lateral swing of the implement from 5 to 10 cm.
- Then from the tractor seat, with the hydraulic control lever in the lower position on the quadrant, slowly drive the tractor forward or backward until it is possible to attach the front end of the upper tractor lever (topling) to the tractor and secure it in that position with the existing pins.
- When you have attached the tool to the tractor in the previous way, it is necessary to bring the upper surface of the tool to a horizontal position, that is, to be parallel to the ground. This is achieved by lengthening or shortening the upper tractor link (topling).

**IMPORTANT: The sequence of attachment of implements to the tractor should always be performed in the same way, namely:**

- a) left lower tractor lever
- b) right lower tractor lever
- c) upper tractor lever

**IMPORTANT:**

After you have finished bringing the device to a horizontal (horizontal) position, you can access the other settings necessary for the normal functioning of the device.

- Using the hydraulics, carefully raise the shredder so that the angle of breaking of the cardan shaft is not too large (never greater than 10°, picture 8.). Once you have raised the tool to its highest position in this way, check the following:

- a) whether the cardan shaft rotates freely and whether its joints are not stuck somewhere,
- b) is the cardan shaft not stretched too much,
- c) check if the cardan guard rotates freely,
- d) fasten the cardan protection with the existing chains from the cardan shaft.

**VAŽNO:** Veoma je važno da zašтите na izlaznom vratilu traktora i na priključnom vratilu oruđa preklapaju kardansko vratilo za najmanje 5 cm. Ako neke zašтите nisu u dobrom stanju, moraju se odmah zameniti novim.



**OPASNOST:**

**Nikada ne modifikovati ili adaptirati kardansko vratilo. Ako je potrebno, kontaktirajte najbliži servisni centar.**

## **RAD SA SITNILICOM BILJNIH OSTATAKA - MULČAROM**

### **RADNI POLOŽAJ**



**OPASNOST:**

**Rukovaoc oruđem mora da sedi isključivo na vozačkom mestu, jer samo sa tog mesta može pravilno da upravlja oruđem.**

**Pre nego što napusti vozačko mesto, rukovaoc mora da zaustavi rad oruđa, povuče parkirnu kočnicu i ugasi motor traktora.**

### **ZA VREME RADA**

Posle pravilnog priključenja oruđa na traktor, zauzimanja vozačkog mesta i startovanja traktora, uraditi sledeće:

- Pomoću hidraulike podignite oruđe na 10-20 cm od tla.
- Pustite da traktor radi sa malim brojem obrtaja motora i uključite izlazno vratilo traktora.
- Ubacite menjač u brzinu za kretanje napred i povećajte broj obrtaja motora.
- Postepeno (lagano) spuštajte oruđe dok ne dodirne zemlju. Ovim omogućujete oruđu da se adaptira na reljef zemlje.



**CAUTION:**

**Do not over-accelerate when the tool is running.**

- drive the implement for a short time, and then check whether the quality of the shredding is satisfactory,
- you can adjust the shredding height by adjusting the roller.
  
- Factors to consider in order to select the appropriate shredding:
- stem height,

- the amount and size of all branches on the ground, tractor speed,
- optimal height of shredding.

Good shredding is achieved with low tractor speed and high blade rotor speed



**CAUTION:**

**In order not to damage the tools or break the knives, limit the speed of the tractor during operation to 6-8 km/h.**

**When the tool is in operation, do not change the direction of movement and do not make sharp turns. Never reverse when the implement is on the ground!**

ADJUSTING THE HEIGHT OF CROPPING RESIDUES

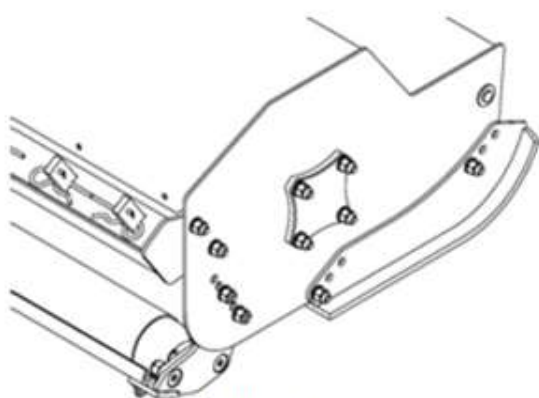


**DANGER:**

**Adjusting the chopping height is a dangerous operation. Wear protective gloves and use appropriate tools and accessories.**

**Proceed as follows to adjust the chopping height.**

- Park the tractor on a level surface and lift the implement off the ground using the hydraulics.
- Place two strong side supports under the tool to secure it from falling.
- Put the implement on the supports, turn off the tractor engine and pull the parking brake.



Slika 9.

The height of the shredding of plant residues is determined by the position of the turntable to which the tool roller bearing is fixed (see Figure 9). To change the position of the roller, loosen the screws (picture 9) on both sides of the side plates, remove the screws from one side, move the roller down or up depending on the required height of shredding. Put the screws back and repeat the same process on the other side. Then tighten all screws to the required torque.

Greater shredding height is achieved with a lower position of the roller and vice versa - smaller with a higher position of the roller, because the tool is closer or further from the ground.

When you move the roller to a position closer to the ground, downwards, you must also adjust the third connection point (topling) so that the implement is parallel to the ground surface.

USEFUL TIPS, FOR YOU

Here are some useful tips on how to eliminate some problems that may arise during operation.

THE PLANT RESIDUES ARE TOO CHUNCED

- slightly raise the knives from the ground, adjust the height with the roller (the cutting knives must not touch the ground)
- increase the speed of the tractor

THE PLANTS ARE NOT SHORTED ENOUGH

- slightly lower the knives towards the ground, adjust the height with the roller (the knives must not touch the ground)
- reduce the speed of the tractor
- do not work if the soil is too wet

## THE ROTOR IS STUCK

- the soil is too wet
- lift the tool off the ground
- reduce the speed of the tractor
- do not work if the grass is too tall

Remove all the plant mass that has stuck to the sides of the rotor, so that the bearings do not overheat.

## THE TOOL JUMPS AND VIBRATES

- stuck foreign body (stump, tree, stone) between the knives
- the knives are mounted incorrectly
- the knives are worn or broken
- during operation, the rotor is damaged by the impact of foreign objects in its central part

## OTHER DEFECTS

The tool does not shred the plant mass along its entire length - the blades are of unequal length. In relation to the shortest knife, sharpen all knives to the same length on the left and right.

## WORK ON INCLINED TERRAIN

When working, move the tool in the direction of the slope.

## WORKING ELEMENTS - CUTTING KNIVES

Check the condition of the working elements - the cutting knives with which the shredder is equipped and make sure that they are worn. If the blades become covered and break during operation, you must immediately replace them with new ones.



### **WARNING:**

**Changing the cutting blades is a dangerous operation, be careful.**

When replacing the cutting blades, proceed as follows:

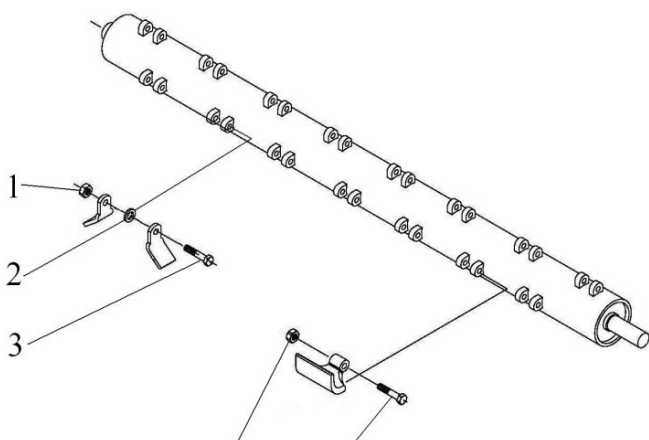


Photo 10.

Park the tractor with the implement on a level surface, then lift the implement off the ground using the hydraulics.

- Place two strong washers on both ends of the tool.
- Lower the implement onto the pads, turn off the tractor and pull the parking brake.

A pair of blades must be mounted opposite each other, in order to maintain the "balance" of the rotor.

When replacing worn or broken blades, do the following:

- Remove the nut (pos. 1, picture 10.) from the screw that tightens the worn knives. Carefully study the position of all parts during the replacement phase, especially the spacer sleeve. Mount the new knives and other parts in the same place, in the same position.

- If the screws and nuts are damaged, be sure to replace them as well.

**DANGER:**

If the cutting blades become jammed, it is strictly forbidden to attempt to clean the tool while it is in operation. First turn off the output shaft drive, then turn off the tractor and apply the parking brake. Wait for the moving parts to stop before cleaning the tool. Be careful!

**STOPPING THE WEAPON**

After completing the work, the operator must:

- turn off the tractor output shaft drive,
- by releasing the hydraulics, lower the tool to the ground,
- turn off the tractor engine and pull the parking brake,
- to make sure that all parts of the tool are at rest.

Only after checking the above-mentioned operations can the operator leave the driver's seat.

**MACHINE PARKING**

- After finishing work, you must park the tool on a flat surface.
- Stop the tractor engine and pull the parking brake.
- When the tractor engine is turned off and all moving parts on the implement are at rest, remove the cardan shaft from the tractor output shaft.
- Unhook the implement from the tractor.

**ATTENTION:**

The place where the tool is parked must be:

- dry,
- sheltered from bad weather conditions,
- protected or locked, to prevent access by children or unauthorized persons.

**CAUTION:**

If you do not use the tool for a long period of time, lubricate all parts that are subject to wear, raise the tool on a wooden stand placed under a canopy or in a separate dry room and cover it with plastic film.

If you have done the previous operations carefully, then the tool is mobile and ready for use when you need to use it again.

**MAINTENANCE****REGULAR MAINTENANCE**

Remember that lower maintenance costs and longer tool life depend on consistent adherence to the given instructions.



### **ATTENTION:**

**Before starting any operation, make sure the tool is parked on a level surface.**

**Secure the implement against movement by placing chocks under the wheels.**

**Maintenance, adjustment and preparation of the tool for work, works only when the cardan shaft is removed from the tool.**

**The service frequency suggested in this manual refers to normal conditions of use.**

**Service operations must be carried out more frequently under severe conditions of use.**



### **CAUTION:**

**Before injecting the grease, you need to wipe the area around the grease nipples and the grease nipple itself with a dry cloth, so that mud and dust are not mixed with the grease and thus reduce the quality of lubrication.**

**Lubricate with the utmost care, because injecting a large amount of grease under pressure can damage the protection of the bearings. Lubricate all places intended for lubrication.**



**WARNING:Keep all lubricants out of the reach of children!**

**Carefully study all warnings on the packages of grease and oils. After working on lubrication, the operator - repairman must thoroughly clean the parts of the body from the remains of grease and oil.**

**Dispose of used oil in the prescribed manner, in accordance with the "Law on Environmental Protection".**

### REPLACEMENT OF V-BELTS



V-belts are properly tightened if the deflection is max. 10 mm to prevent excessive sliding. Insufficiently tensioned belts are the cause of poor operation of the grinder and premature damage and tearing of the belts.

When replacing belts or checking their tightness, do the following:

- Unscrew the nuts and remove the protective cover for the V-belts.
- Loosen the screw holding the drive pulley housing.
- Loosen the nut of the adjusting screw.
- Tighten the adjusting screw as much as necessary to ensure the required tension of the belts.
- Tighten the control nut of the adjusting screw.
- Tighten all screws holding the drive pulley housing.
- Put the protective cover back in place.

All parts of the transmission from the reducer to the drive pulley must be aligned when tensioning the belts. Loosen the screws on the reducer plate, raise or lower the reducer so that the transmission shaft is parallel to the upper tool plate, then tighten the screws.

Check that the pulleys are aligned when the belts are tightened or changed.

To check, use a metal ruler that you have to place on the surfaces of both pulleys. The edge of the ruler must adhere to all four points.



**WARNING: IT IS NECESSARY AND IMPORTANT TO CHECK THE TENSION OF THE BELTS AND TIGHTEN THEM CORRECTLY. IT IS ESPECIALLY IMPORTANT TO DO THIS AFTER 0.5 HOURS OF USING THE WEAPON. WHEN REPLACING WORN BELTS, REPLACE THE ENTIRE SET OF BELTS, REGARDLESS OF THE CONDITION OF ONE BELT IN RELATION TO THE OTHER.**

## LUBRICATION

It is very important to properly lubricate any tool, both the transmission and all the parts that slide into each other, in order to meet the strict requirements for work in the most difficult conditions, which is of vital importance for the long life and functionality of the tool.

That's why you have to perform lubrication regularly - at certain time intervals.

The lubrication interval given in this manual refers to the tool used under normal conditions.

If the tool works in difficult working conditions, then the lubrication must be in shorter time intervals.

## RECOMMENDED OILS

To lubricate the gears in the multiplier, it is recommended to use hypoid oil SAE 85 W-140, to achieve the quality level of the US military specification MIL-L-2105C and API Service Classification GL-5 or the JUS B.H3.303 Type "MP-5" standard.

## RECOMMENDED GREASE

- For lubrication of all places where grease nipples are located, use calcium grease with an additive that increases adhesion to metal surfaces, and that meets JUS B.H3.634 VM-2 specifications NLGI-2.

FOR OIL CHANGE USE: \_\_\_\_\_

<b>Manufacturer name</b>	<b>Oil mark</b>
Rafinerija Beograd	HIPOL - B
"FAM" Kruševac	MULTI HIPO
"MODRIČA" Modriča	HIPOIDNO ULJE - B
"INA" Zagreb	HIPENOL GTL
"SHELL"	SPIRAX - HD
"MOBIL"	MOBILUBE - HD
"VALVOLINE"	"VALVOLINE" X-18
"ESSO"	ESSO GEAR OIL GX
"CASTROL"	CASTROL EPX

FOR GREASE CHANGE USE: \_\_\_\_\_

<b>Manufacturer name</b>	<b>Oil mark</b>
Rafinerija Beograd	LUMA - 2
"FAM" Kruševac	FOR - 2
"MODRIČA" Modriča	LITMA - 2
"INA" Zagreb	LIS - 2
"SHELL"	ALVANIJA R-2
"MOBIL"	MOBILUX 2
"VALVOLINE"	GREASE LB1-2

SERVICE ADJUSTMENTS - AFTER THE FIRST 8 HOURS OF OPERATION

Check each tool after the first 8 hours of use. The verification procedure is as follows:

- Detailed check of the basic condition of the tool.
- Checking the wear and damage of the cutting knives, be sure to tighten all the screws and nuts on the rotor with the knives.
- Tighten all other screws and nuts with the required torque.

SERVICE ADJUSTMENTS - AFTER EVERY 20 HOURS OF OPERATION

- Check and tighten all screws and nuts on the blade rotor with the required torque.
- Lubricate all parts of the cardan shaft, bearings on the roller, all screws on the plate for adjusting the height of the roller.

SERVICE ADJUSTMENTS - AFTER EVERY 100 HOURS OF OPERATION

- Check the oil level in the multiplier housing. If necessary, add oil through the plug on the top of the housing.

SERVICE ADJUSTMENTS - AFTER EVERY 500 HOURS OF OPERATION

- Changing the oil in the multiplier housing after every 500 hours of operation or at least once a year;
- It is best to drain the oil immediately after the tool is finished, since the oil is still warm and the sediment has not yet settled in it.

STORAGE - STORAGE OF MULCHER

- If you do not use the shredder for a long period of time, then all parts that came into contact with plant residues should be completely cleaned of stuck-on soil and plant residues.
- After cleaning, wash the entire tool well.
- Drain the oil from the reducer and fill it with clean oil to the appropriate level (dispose of the old oil, discard it and comply with the law on environmental protection).
- Carefully remove all excess oil with a cloth.
- Tighten all screws and nuts on the tool.
- Clean rusty surfaces and exposed areas and coat with protective paint.
- Raise the tool on a wooden stand placed under a canopy or in a separate dry room. If you have done the previous operations carefully, the trinket is mobile and ready for use in the next working season.



FPM AGROMECHANIKA DOO  
Đorđa Simeonovića 25  
19370 Boljevac – Srbija

## DECLARATION OF CONFORMITY OF MACHINES

We,

**FPM Agromehanika DOO,**  
Djordja Simeonovića 25, 19370, Boljevac, Srbija

we hereby declare, as manufacturers, within our responsibility, that the product is

**Type: BOČNI MULČAR**

<b>Model:</b>	<b>BM 160 PRO</b>	<b>FPM 618.279 - 1,6 m</b>
	<b>BM 180 PRO</b>	<b>FPM 618.212 - 1,8 m</b>
	<b>BM 200 PRO</b>	<b>FPM 618.190 - 2,0 m</b>

**Year of production: 2022**

in accordance with the requirements established by the European Directive 2006/42/EC (for machines).

The product complies with the following standards:

- SRPS EN ISO 12100:2014
- SRPS EN ISO 13857:2020
- SRPS EN ISO 4254-1:2016
- SRPS EN ISO 4254-12:2013
- SRPS EN ISO 4254-12:2013 / A1:2017
- EN 1553:2000
- SRPS ISO 11684:1999
- SRPS EN ISO 11201:2014

In Boljevcu,  
29.11.2022.

Potpis odgovorne osobe:  
GENERALNI DIREKTOR  
Branislav Rajić, maš.ing



## LIST OF SPARE PARTS - Instructions for ordering spare parts –

To order spare parts or components, contact the sales department - spare parts.

The existing pictures on the following sheets show the machine parts which are numbered.

In the text next to the picture is given: the serial number of the machine part, its identification number, the quantity in the plant residue shredder assembly and, if necessary, the dimensions or standard. Pay attention to the additional markings on the sheets.

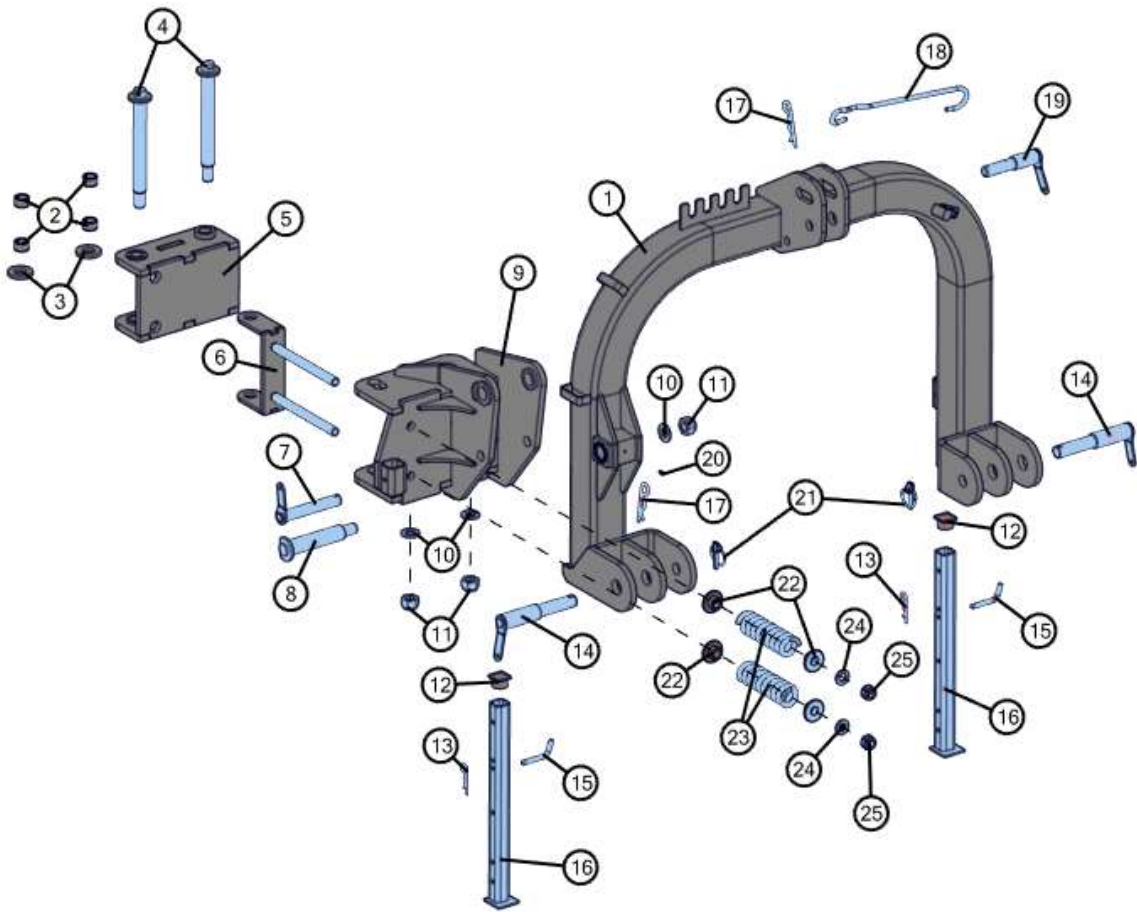
**In order to avoid misunderstandings and wrong delivery when ordering spare parts, you must specify:**

- mark and number of the change (series, №)
- number and name of the spare part (specify in this list)
- quantity of requested spare parts
- desired delivery method (post, express, etc.)
- full address of the customer (with postal code)

<b>FPM</b> AGROMEHANIKA		Ul. Bonda Simeonovića 25, 14370 Beljevac, www.fpm-agromehanika.rs	
• Made in Serbia •			
SNAGA / POWER	<input type="text"/>	MW <sup>1</sup>	<input type="text"/>
<input type="checkbox"/> Z	WEIGHT (kg) / MASA (kg)	<input type="text"/>	YEAR / GODINA <input type="text"/>
TYPE / SERIJA	<input type="text"/>	№	<input type="text"/>

On your small change on the plate shown in the picture, the series and serial number are stamped. Warranty cases and other issues cannot be resolved without serial and serial number information.

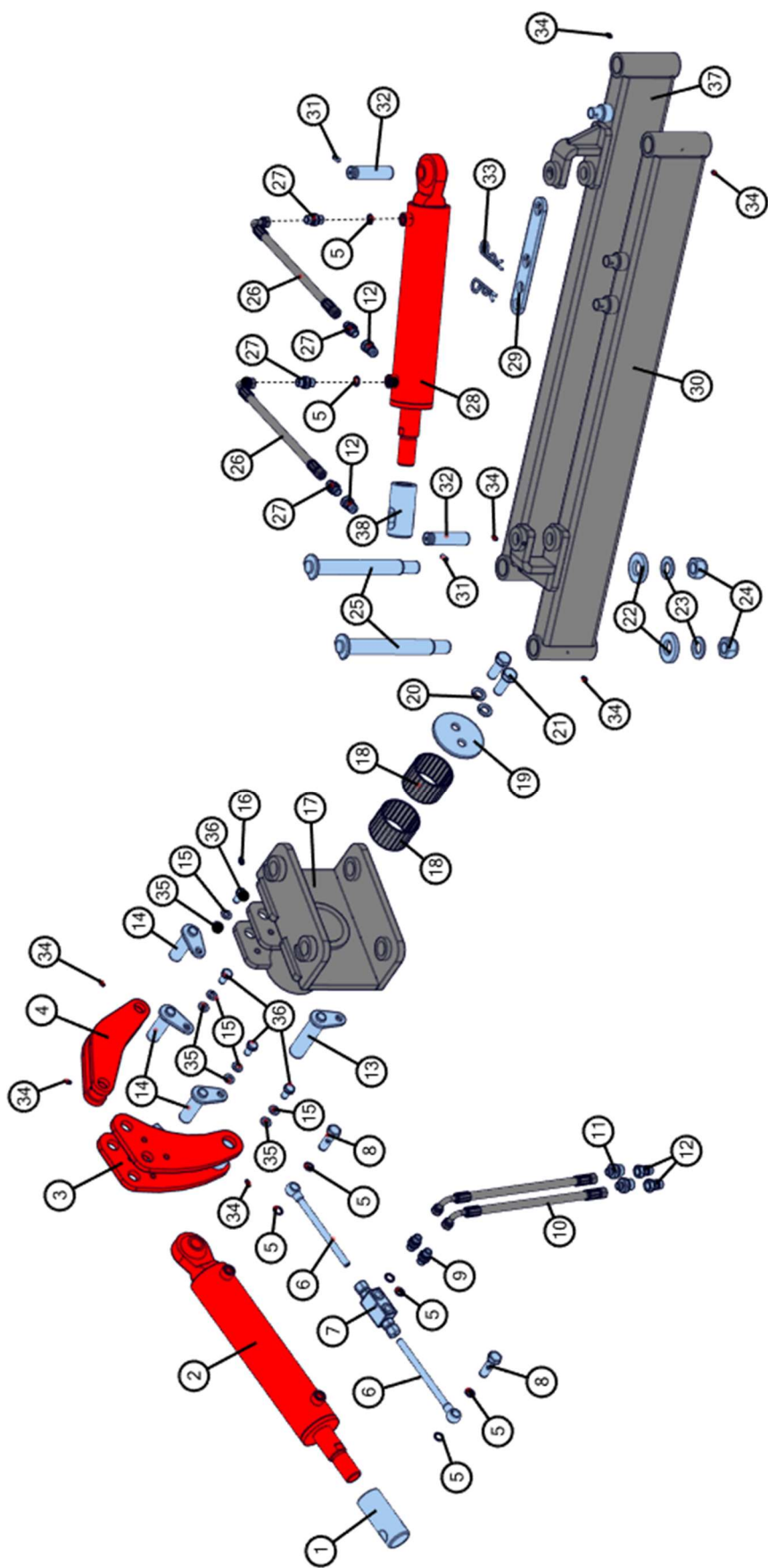
# Spare parts list



Slika 1

No.	Naziv	Oznaka	Ident	Količina
1	PRIKLJUČNI RAM SH - Z.S.	618.08.755	63705	1
2	ČAURA BK090 3020	000.00.000	64281	4
3	PODLOŠKA	618.09.522	92477	2
4	OSOVINA PRIKLJUČKA PROFI - Z.S.	618.09.605	93238	2
5	UNUTRAŠNJI PRIKLJUČAK RAMA - Z.S.	618.09.603	93233	1
6	NOSAČ OPRUGA - Z.S.	618.09.523	92476	1
7	ZABRAVLJIVAČ RAMA - Z.S.	618.08.537	62285	1
8	OSOVINA RAMA - Z.S.	618.08.534	62282	1
9	PRIKLJUČAK RAMA PROFI - Z.S.	618.09.515	92402	1
10	PODLOŠKA B24	021.20.001	7950	3
11	NAVRTKA M24-6H	020.06.011	56771	3
12	ZAŠTITNI ČEP	618.06.666	40271	2
13	OSIGURAČ-R 4X64	627.12.857	4977	2
14	PRIKLJUČNA TAČKA BOČNOG MULČARA - Z.S.	618.09.506	92298	2
15	OSIGURAČ STOPE	618.06.664	40272	2
16	STOPA - Z.S.	618.06.669	40267	2
17	OSIGURAČ-R 6.3X97	502.00.435	36563	2
18	DRŽAČ KARDANSKOG VRATILA	618.06.676	40276	1
19	TREĆA PRIKLJUČNA TAČKA - HERKULES - Z.S.	618.08.260	58396	1
20	MAZALICA AM6	020.16.001	2392	1
21	PREKLOPNI OSIGURAČ 12X45	611.20.010	23897	2
22	ČAURA OPRUGE	618.09.517	92452	4
23	OPRUGA 10x55x185	000.00.000	63889	2
24	PODLOŠKA A20	021.20.001	2515	2
25	NAVRTKA M20x1.5-6H	020.06.011	41828	2

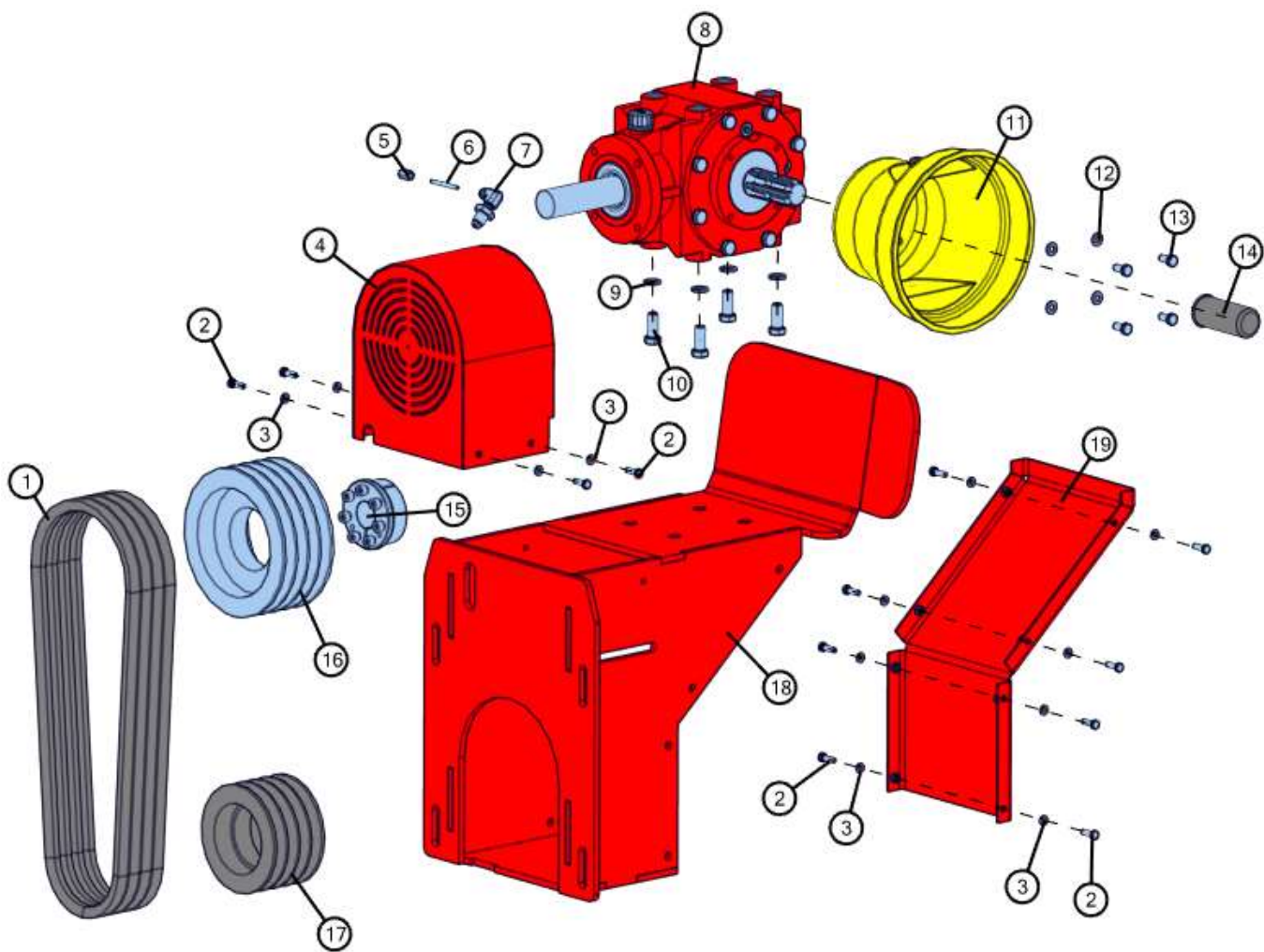
Tabela 1



Slika 2

No.	Naziv	Oznaka	Ident	Količina
1	ČAURA HIDROCILINDRA	618.08.344	61003	1
2	HIDROCILINDAR DVOSM. DEJSTVA 40/70	618.08.332	60974	1
3	POLUGA MULČARA - Z.S.	618.08.530	62278	1
4	POLUGA PRIKLJUČKA - Z.S.	618.08.525	62275	1
5	ZAPTIVKA <z 7930 501.30.801 A16 x 20	023.82.001	27844	8
6	OKO+CEV 12L200-3/8" - 811 516	000.00.000	64269	2
7	VENTIL NEPOVRATNI 12-ISI-815 765	000.00.000	64268	1
8	VIJAK PROVODNI M16X1.5	608.00.172	43892	2
9	PRIK.REDUCIR GES10LR3/8" S	000.00.000	64272	2
10	HID. CREVO 2SC DN08 M16x1,5 L=4000	000.00.000	64276	2
11	SPOJNICA M16X1.5-M22X1.5	627.13.215	15952	2
12	UVLAKAČ SPOJNICE M16x1,5	628.02.230	65012	4
13	ZABRAVLJIVAČ (Ø30; L=110) - Z.S.	618.08.360	61105	1
14	ZABRAVLJIVAČ (Ø25) - Z.S.	618.08.357	61104	3
15	PODLOŠKA B12	021.22.005	72	4
16	MAZALICA AM 8X1	020.16.001	5808	1
17	PRIKLJUČAK MULČARA - Z.S.	618.09.510	92120	1
18	ČAURA BK090 8060	000.00.000	64282	2
19	LIM NOSAČA RUKE	618.09.494	92100	1
20	PODLOŠKA B18	021.22.005	58969	2
21	VIJAK M18x50	020.00.001	39318	2
22	PODLOŠKA	618.09.522	92477	2
23	PODLOŠKA B24	021.20.001	7950	2
24	NAVRTKA M24-6H	020.06.011	56771	2
25	OSOVINA PRIKLJUČKA - Z.S.	618.08.531	62279	2
26	HID. CREVO 2SC DN08 M16x1,5	000.00.000	64274	2
27	SPOJNICA HIDROCILINDRA M16x1,5	000.00.000	64277	4
28	HIDROCILINDAR DVOSM. DEJSTVA 25/50	618.08.331	60973	1
29	GRANIČNIK RUKE PRO	618.09.032	64606	1
30	CEV RUKE MULČARA - DESNA - Z.S.	618.09.501	92127	1
31	VIJAK M8 x 20-6g DIN 914	020.02.008	42211	2
32	OSOVINICA CEVI	618.08.539	62287	2
33	OSIGURAČ-R 5X80	501.10.578	038087	2
34	MAZALICA AM6	020.16.001	2392	7
35	PODLOŠKA A12	021.20.001	66	4
36	VIJAK M12X 22-6g	020.00.001	21329	4
37	CEV RUKE MULČARA - Z.S.	618.09.499	92126	1
38	ČAURA HIDROCILINDRA - PRO	618.09.673	94608	1

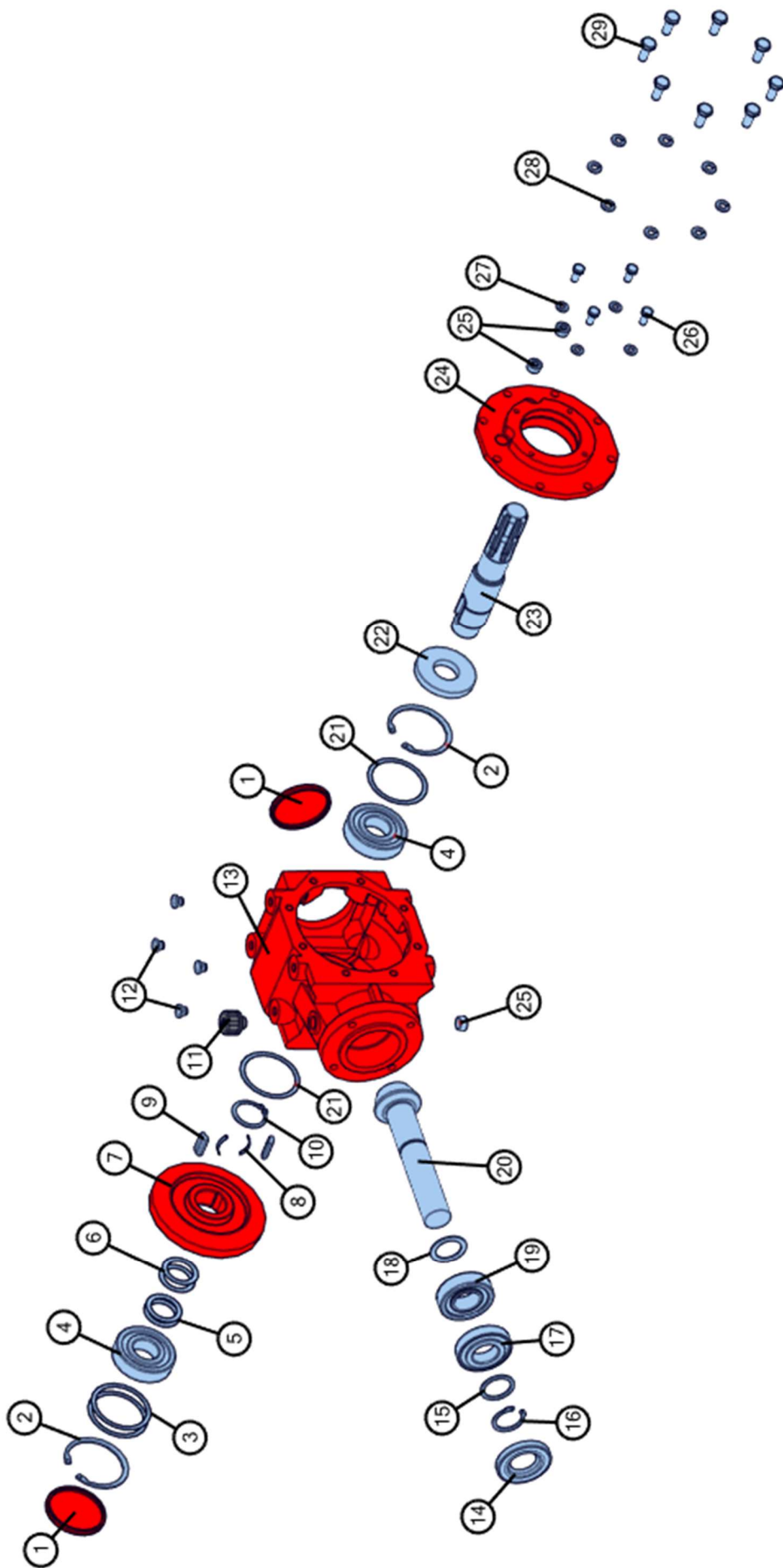
Tabela 2



Slika 3

No.	Naziv	Oznaka	Ident	Količina
1	REMEN XPB 1250	000.00.000	63750	4
2	VIJAK M 6x20	020.00.001	7799	12
3	PODLOŠKA B6	021.22.005	69	12
4	ZAŠTITA FPM - Z.S.	618.08.825	93317	1
5	PODLOŠKA MULČARI 8064931	618.07.283	40355	1
6	CREVO MAZALICE 3178795	618.07.286	40352	1
7	VIJAK SPECIJALNI 8064930	618.07.288	40354	1
8	MULTIPLIKATOR-T311 SS (Ø35) - M.S.	618.09.615	93318	1
9	PODLOŠKA B12	021.22.005	72	4
10	VIJAK M12 x 30	020.00.001	4570	4
11	ZAŠTITNIK KARD. VRATILA - VEĆI	000.00.000	59034	1
12	PODLOŠKA A8	021.20.001	65	4
13	VIJAK M 8x 18-6g	020.00.001	2544	4
14	POKLOPAC KARDANSKOG VRATILA	627.15.130	37132	1
15	ELASTIČNI VEZNI ELEMENT 50x80	618.07.210	40346	1
16	REMENICA SPB BK0180480	000.00.000	65678	1
17	REMENICA SPB BK0130480	000.00.000	65677	1
18	NOSAČ MULTIPLIKATORA - Z.S.	618.08.820	93301	1
19	SAVIJENA ZAŠTITA FPM - Z.S.	618.08.832	93341	1

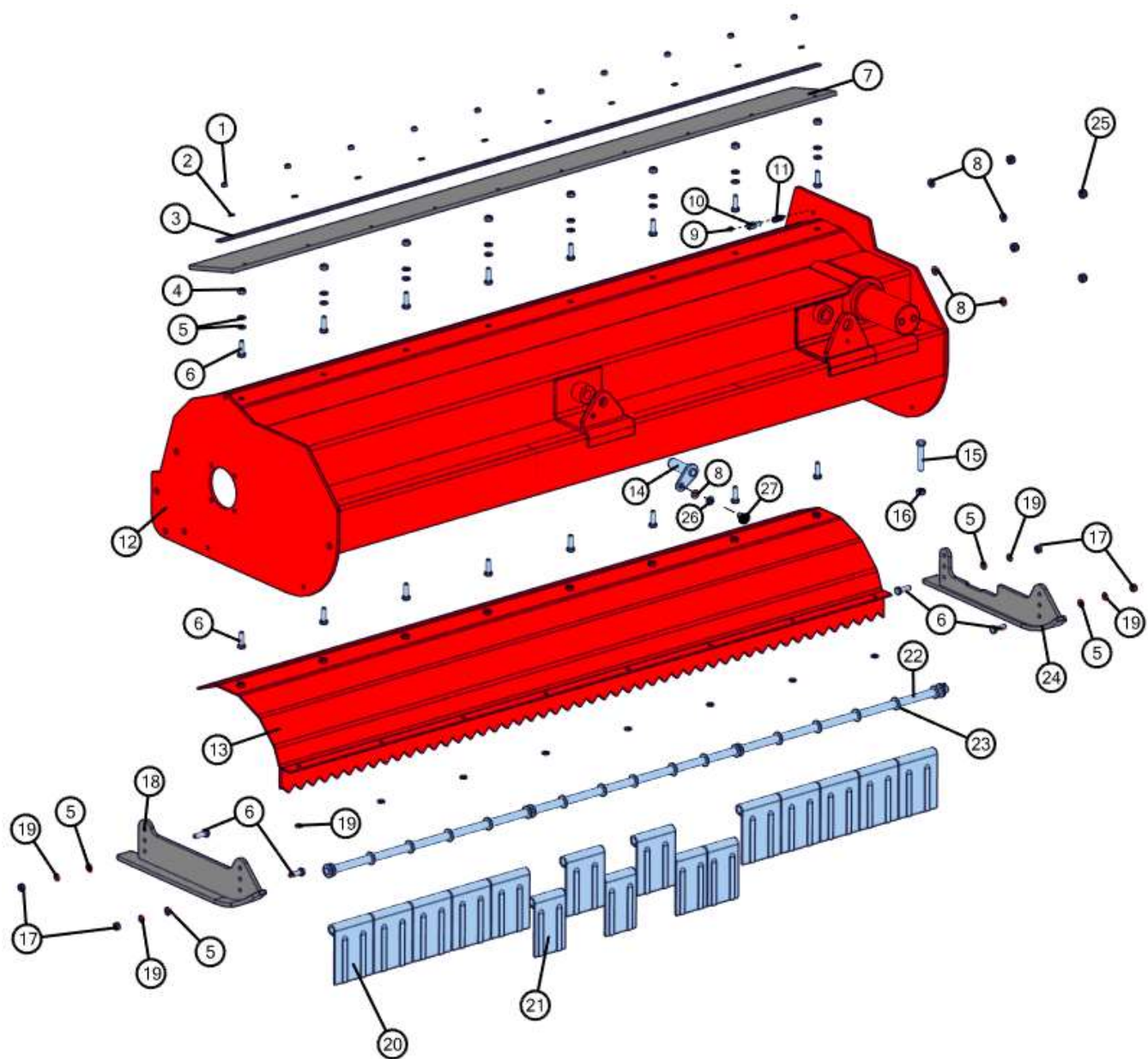
Tabela 3



Slika 4

No.	Naziv	Oznaka	Ident	Količina
1	POKLOPAC ULJA 80 x 10	618.07.258	47617	2
2	USKOČNIK 80	021.23.005	6324	2
3	PODLOŠKA 69X79.9X0.2	618.07.943	58260	2
4	LEŽAJ 6307 35 X 80 X 21	020.31.001	6309	2
5	PODLOŠKA 35.3X48X0.6	618.07.252	58257	2
6	PODLOŠKA 35.3X48X0.2	618.07.251	58256	2
7	POGONSKI ZUPČANIK - SUPROTNOSMERNI	618.09.816	95725	1
8	OPRUGA SPOJNICE COMER T-311 A	618.07.259	47618	2
9	KLIN SPOJNICE	618.07.253	47492	2
10	USKOČNIK 42	021.23.002	11254	1
11	ODUŠAK TSSR3 M18x1,5-CON HEAD	020.03.007	42597	1
12	PLASTIČNI ČEP M12 x 1,5	000.00.000	101478	4
13	KUĆIŠTE MULTIPLIKATORA-odlivak	618.07.237	47320	1
14	SEMERING 619.81.043	023.83.002	27438	1
15	DISTANTNA PODLOŠKA	619.81.016	27442	1
16	USKOČNIK 612.04.319 35 x 2.5	D021.23.002	13116	1
17	LEŽAJ 30207 - 35 X 72 X 18.25 - 627.15.078	022.31.046	7772	1
18	PODMETAČ 35 x 48 x 2	618.10.451	111063	1
19	LEŽAJ 32207 35 x 72 x 24,25	022.31.048	47614	1
20	GONJENI ZUPČANIK (fi 35)	618.08.596	62689	1
21	PODLOŠKA 69X79.9X0.6	618.07.249	47610	2
22	SEMERING 35 X 80 X 10	023.83.001	42835	1
23	POGONSKO VRATILO - SUPROTNOSMERNO	618.08.800	63756	1
24	POKLOPAC KUĆIŠTA MULTIPLIKATORA T-311 A	618.07.247	47609	1
25	KONUSNI ČEP	627.14.455	24568	3
26	VIJAK M 8x 18-6g	020.00.001	2544	4
27	PODLOŠKA A8	021.20.001	65	4
28	PODLOŠKA B10	021.22.005	71	8
29	VIJAK M10x25	020.00.001	2191	8

Tabela 4



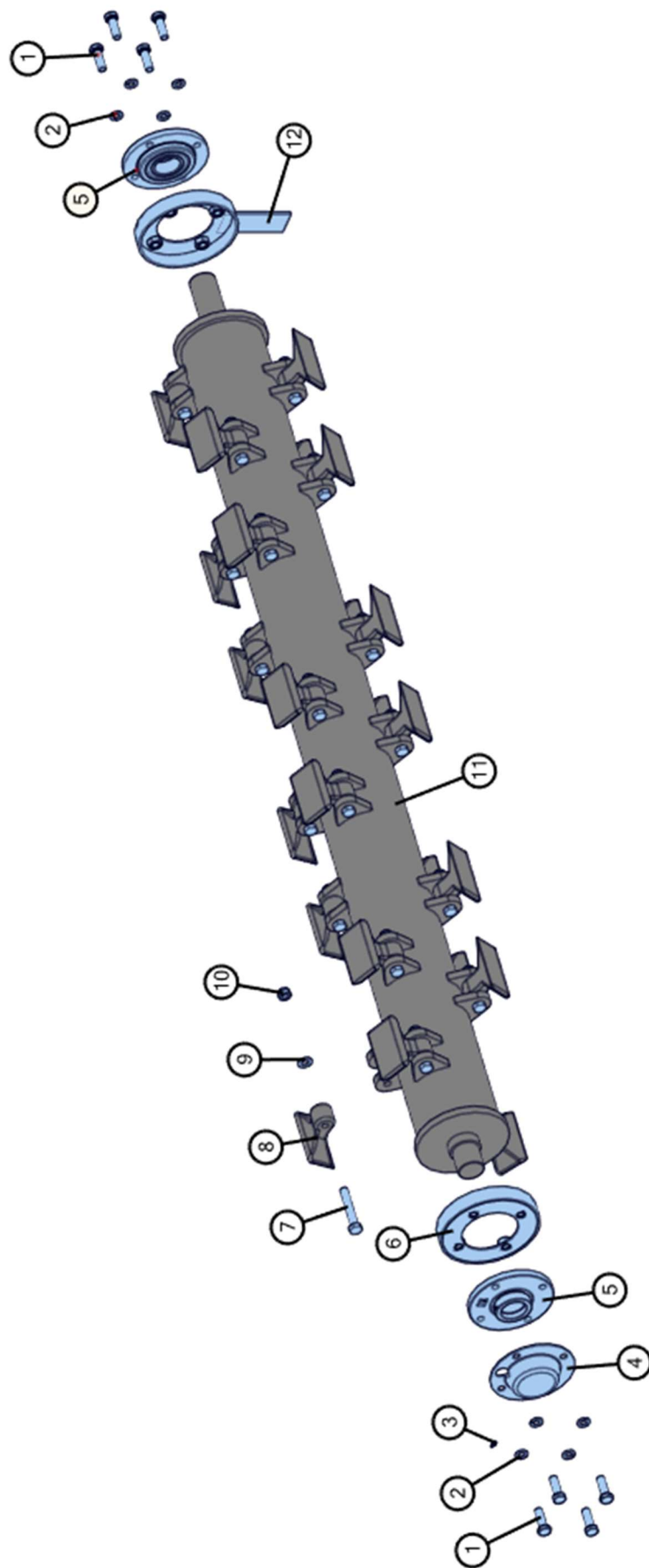
Slika 5

No.	Naziv	Oznaka	Ident	Količina
1	NAVRTKA M 8-6H	020.06.011	2444	10
1*	NAVRTKA M 8-6H	020.06.011	2444	8
1**	NAVRTKA M 8-6H	020.06.011	2444	7
2	PODLOŠKA A8	021.20.001	65	10
2*	PODLOŠKA A8	021.20.001	65	8
2**	PODLOŠKA A8	021.20.001	65	7
3	TRAKA GUME 2 m	618.09.519	92455	1
3*	TRAKA GUME 1,6 m	618.09.423	91469	1
3**	TRAKA GUME 1,8 m	618.09.518	92454	1
4	NAVRTKA M10-6H	020.06.011	2208	8
4*	NAVRTKA M10-6H	020.06.011	2208	6
4**	NAVRTKA M10-6H	020.06.011	2208	7
5	PODLOŠKA A10	021.20.001	2493	20
5*	PODLOŠKA A10	021.20.001	2493	16
5**	PODLOŠKA A10	021.20.001	2493	18
6	VIJAK M10x35 JUS 053	020.00.001	12881	20
6*	VIJAK M10x35 JUS 053	020.00.001	12881	16
6**	VIJAK M10x35 JUS 053	020.00.001	12881	18
7	GUMA MULČARA 2 m	618.08.637	62831	1
7*	GUMA MULČARA 1,6 m	618.08.636	62830	1
7**	GUMA MULČARA 1,8 m	618.08.941	64064	1
8	PODLOŠKA A12	021.20.001	66	5
9	SPOLJNI DEO MAZALICE	618.07.284	40351	1
10	NASTAVAK M10 - M10	618.09.542	92593	1
11	UNUTRAŠNJI DEO MAZALICE	618.07.287	40353	1
12	BOČNI MULČAR 2m PRO - Z.S.	618.09.870	96045	1
12*	BOČNI MULČAR 1,6m PRO-Z.S.	618.10.496	111224	1
12**	BOČNI MULČAR 1,8m PRO-Z.S.	618.10.285	100769	1
13	UNUTRAŠNJI PLAŠT 2 m - Z.S.	618.09.514	92441	1
13*	UNUTRAŠNJI PLAŠT 1,6m- Z.S.	618.10.500	111228	1
13**	UNUTRAŠNJI PLAŠT 1,8m- Z.S.	618.10.287	100773	1
14	ZABRAVLJIVAČ (Ø25) - Z.S.	618.08.357	61104	1
15	VIJAK M12 x 70 JUS 053	020.00.001	7914	1
16	NAVRTKA M12-6H	020.06.010	62	1
17	NAVRTKA M10-6H	020.06.010	61	4
18	SAONIK BM DESNI - Z.S.	618.10.115	98609	1
19	PODLOŠKA B10	021.22.005	71	12
20	ZAŠTITNI LIM (L=125)	618.08.502	62071	12
20*	ZAŠTITNI LIM (L=125)	618.08.502	62071	12
20**	ZAŠTITNI LIM (L=125)	618.08.502	62071	12
21	ZAŠTITNI LIM (L=100)	618.08.503	62073	4
21*	ZAŠTITNI LIM (L=100)	618.08.503	62073	0
21**	ZAŠTITNI LIM (L=100)	618.08.503	62073	2
22	ŠIPKA 2 m - Z.S.	618.08.549	62441	1
22*	ŠIPKA 1,6 m - Z.S.	618.10.192	97784	1
22**	ŠIPKA 1,8 m - Z.S.	618.09.493	92085	1
23	PODLOŠKA A16	021.20.001	68	19
23*	PODLOŠKA A16	021.20.001	68	15
23**	PODLOŠKA A16	021.20.001	68	17
24	SAONIK BM LEVI - Z.S.	618.10.116	98610	1
25	NAVRTKA M12 JUS M.B1.622	020.07.005	04671	4
26	PODLOŠKA B12	021.22.005	72	1
27	VIJAK M12X 22-6g	020.00.001	21329	1

\*BM 160 PRO

\*BM 180 PRO

Tabela 5



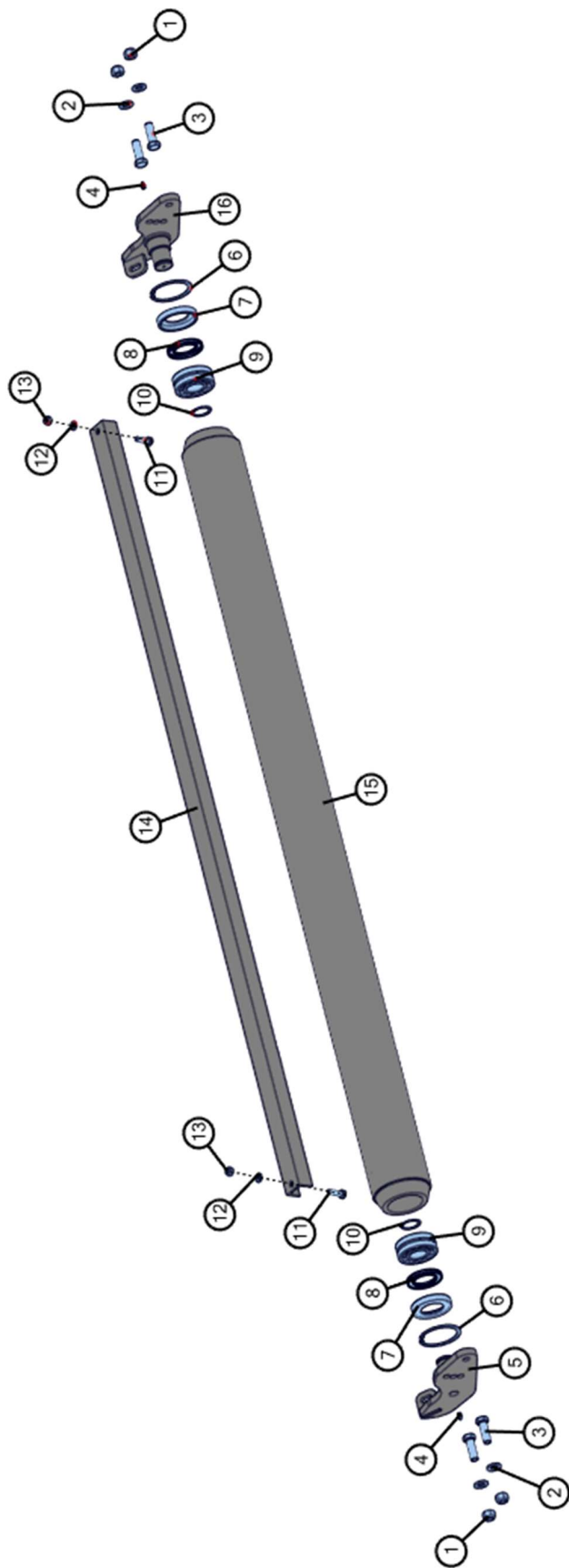
Slika 6

No.	Naziv	Oznaka	Ident	Količina
1	VIJAK M14x45	020.00.001	38497	8
2	PODLOŠKA B14	021.22.005	20783	8
3	Mazalica AM6	020.16.001	2392	1
4	BOČNI POKLOPAC ESFCE 210	618.09.007	64341	1
5	LEŽAJ ESFCE 210 SNR	022.31.001	63748	2
6	ZAŠTITA ROTORA - DESNA - Z.S.	618.09.018	64492	1
7	VIJAK M14x90-6g	020.00.001	63479	24
7*	VIJAK M14x90-6g	020.00.001	63479	20
7**	VIJAK M14x90-6g	020.00.001	63479	22
8	ČEKIĆ NOŽ SH1	000.00.000	62966	24
8*	ČEKIĆ NOŽ SH1	000.00.000	62966	20
8**	ČEKIĆ NOŽ SH1	000.00.000	62966	22
9	PODLOŠKA A14	021.20.001	67	24
9*	PODLOŠKA A14	021.20.001	67	20
9**	PODLOŠKA A14	021.20.001	67	22
10	NAVRTKA M14x1.5	020.06.011	63034	24
10*	NAVRTKA M14x1.5	020.06.011	63034	20
10**	NAVRTKA M14x1.5	020.06.011	63034	22
11	ROTOR SH (L=2 m) - Z.S.	618.08.588	62674	1
11*	ROTOR SH (L=1,6 m) - Z.S.	618.08.586	62672	1
11**	ROTOR SH (L=1,8 m) - Z.S.	618.08.587	62673	1
12	ZAŠTITA ROTORA - LEVA - Z.S.	618.09.019	64493	1

\*BM 160 PRO

\*BM 180 PRO

Tabela 6



Slika 7

No.	Naziv	Oznaka	Ident	Količina
1	NAVRTKA M16-6H	020.06.011	23131	4
2	PODLOŠKA A16	021.20.001	68	4
3	VIJAK M16x50	020.00.001	10973	4
4	MAZALICA AM 8X1	020.16.001	5808	2
5	RUKAVAC VALJKA BM DESNI - Z.S.	618.09.852	96016	1
6	USKOČNIK 90	021.23.005	19503	2
7	ZAŠTITA SEMERINGA 50 x 80	618.09.357	91418	2
8	SEMERING SC 50X80X8	023.83.002	59505	2
9	LEŽAJ 22308 40X 90X33	022.31.045	7820	2
10	USKOČNIK 40	021.23.002	13106	2
11	VIJAK M10x35 JUS 053	020.00.001	12881	2
12	PODLOŠKA A10	021.20.001	2493	2
13	NAVRTKA M10-6H	020.06.011	2208	2
14	ČISTAČ BM 200	618.09.858	96014	1
14*	ČISTAČ BM 160	618.09.857	96021	1
14**	ČISTAČ BM 180	618.09.859	96022	1
15	VALJAK BM 2 - Z.S.	618.09.415	91436	1
15*	VALJAK BM1,6 - Z.S.	618.09.395	91433	1
15**	VALJAK BM1,8 - Z.S.	618.09.355	91411	1
16	RUKAVAC VALJKA BM LEVI - Z.S.	618.09.853	96017	1

\*BM 160 PRO

\*BM 180 PRO

Tabela 7







**This machine meets the safety requirements of the European Machinery Directive.**



**THE OPERATOR SHOULD COMPLY WITH ALL SAFETY AND HEALTH REGULATIONS, AS WELL AS ROAD TRAFFIC REGULATIONS.  
FOR YOUR OWN SAFETY, USE ONLY ORIGINAL PARTS MANUFACTURED BY FPM AGROMEHANIKA DOO BOLJEVAC.  
THE MANUFACTURER IS NOT RESPONSIBLE FOR THE CONSEQUENCES OF IMPROPER USE OR FAILURE TO FOLLOW THE RECOMMENDATIONS GIVEN IN**



**FOR YOUR PERSONAL SAFETY AND TO GET  
THE BEST OUT OF YOUR LITTLE PLANT  
RESIDUES, USE ONLY  
ORIGINAL PARTS MANUFACTURED  
FPM AGROMEHANIKA DOO BOLJEVAC**

FPM AGROMEHANIKA DOO  
19370 Boljevac, ul. Đorđa Simeonovića br.25

TELEPHONE:  
Sales department:  
Tel: +381 30 461 17  
Mob: +381 63 485 312

Service department:  
Tel: +381 30 463 619  
Mob: +381 62 80 28 227

Export – Import department:  
Tel: +381 30 463 531  
Fax: +381 30 463 405