

USER MANUAL WARRANTY

			
MINI BASIC CY-K	MINI TANK CY-J	MINI TANK BRUSH CY-B	MINI TANK BRUSH HYDRO CY-A
			
BASIC CY-K	TANK CY-J	TANK BRUSH CY-B	TANK BRUSH HYDRO CY-A

Bytów 2023 Issue 01

TRANSLATION OF THE ORIGINAL MANUAL



ATTENTION!

Before using the machine, please read thoroughly this User Manual and observe the safety instructions contained herein.

The User Manual constitutes an inherent part of the machine!

Keep the User Manual in a safe place, where it should be accessible to the machine operator during an entire lifespan of the machine.

In the event of its loss or damage, the user must acquire a new copy from the machine dealer or manufacturer.

In the event the machine is sold or made available to another user, the User Manual must be attached with the declaration of conformity for the machine.

The manufacturer reserves its copyrights to the User Manual.

Copying, processing of the User Manual and its parts without the manufacturer's permission is strictly **prohibited**.

The Manufacturer has the right to make changes to the User Manual without prior notice and is not obliged to replace earlier editions with newer ones.

Table of Contents

1. Introduction	4
2. Rules of safe operation	5
2.1 User safety.....	5
2.2. Safety marking on the sweeper	9
2.3. Hazards present during sweeper operation, residual risk:	10
3 Intended use	11
4. Description of the device	12
4.1. Equipment and accessories	13
4.1.1. Basic.....	13
4.2 Sweeper vertical ground following system.	14
4.3. Technical specification	15
4.4. Forces affecting the suspension system.....	16
5. Machine operation	17
5.1. Installation of the sweeper	17
6. Operation and maintenance	20
6.1 Sweeper height adjustment	21
6.2 Brush wear.....	22
6.3 Operating the sprinkler	23
6.4 Out-of-season maintenance.....	24
6.5 Scrapping, environment	25
7. Spare parts catalogue	26
8. Warranty	27
9. Declaration of Conformity	29

1. Introduction

Before the first use of the sweeper, you must thoroughly read and understand this User Manual, and follow all the instructions contained herein.



NOTE!
Read the User Manual
before using the sweeper. Keep the User
Manual in a safe place

This User Manual contains a description of hazards that can occur in case of non-compliance with safety rules during operation and maintenance of the sweeper. The User Manual specifies precautionary measures to be taken to minimize or avoid risks.

This manual also contains principles of correct use of the machine and specifies the maintenance jobs to be carried out.

If you do not understand any information contained herein, please contact directly the manufacturer.



CAUTION!
This symbol warns of a hazard.
The warning symbol indicates an important hazard
information given in the User Manual. Please read
the information, follow the instructions
and exercise particular caution.

2. Rules of safe operation

2.1 User safety

The sweeper can only be used by adults, who have learnt its operation and read this User Manual, and are properly qualified. The sweepers should be operated with all necessary precautions, in particular:

- Apart from this User Manual, observe also general rules of health and safety at work.
- Observe warning symbols placed on the machine.
- Never allow the vehicle towing the sweeper to be operated by a person other than its operator, and in any case do not allow other people to remain in the vehicle or by the machine while in operation.
- Sweepers may be operated by a person who is qualified to drive the vehicle to which the sweeper is fitted in accordance with the machine and vehicle manufacturer's recommendations.
- Before working with the sweeper, ensure that there are no bystanders (especially children) or animals in the vicinity. The operator of the machine has a duty to ensure that there is adequate visibility and space for the work to be carried out safely.
- The operating position of the operator, while working with the machine, is the cabin of the vehicle to which the machine is attached.
- The vehicle that works with the machine must be technically sound, properly marked and lit.
- The operator must ensure that organisation and adequate security is in place when moving loads that may present a potential hazard.
- Please note that there are many elements of the machine that may cause an injury (sharp edges, protruding parts, etc.). During the use of the equipment, exercise particular caution when moving close to the above-mentioned critical spots, and it is obligatory to use the following personal protection equipment:
 - protective clothing,
 - protective gloves,
 - safety footwear
 - safety goggles
- It is forbidden to transport persons, animals or objects on the frame and surfaces of the machine.
- It is forbidden to move, shift or drag (tow) any objects or other machines
- No loads may be suspended, hitched by ropes or other slings to the sweeper and must not be lifted, towed or transported in any way.
- Before starting work, the operator must familiarise himself with the technical condition of the roads, the properties and condition of the ground, the weight of the aggregate, the safety devices, and learn about the weather conditions for carrying out the work.

- The operator must plan the work, define the directions for driving, turning and manoeuvring the machine, taking into account the space limitations and overall dimensions of the machine, and make sure it is safe to do the job.
- Before starting work, visually inspect the vehicle and attached machine for damage. Any damage, cracking or deformation eliminates the machine from operation.
- Work outdoors must be halted if weather conditions deteriorate to such an extent that the safe operation of the machine is jeopardised and a danger to the operator and others is created.
- A sweeper mounted on a vehicle, once lifted, must not be left unattended.
- Persons who have not read the User Manual and the load characteristics are not allowed to operate the machine.
- It is forbidden to load the sweeper and the vehicle beyond their capacity as specified by the manufacturers.
- A worker carrying out work with a sweeper outside the workplace should have the machine's User Manual and be provided with a first aid kit containing first aid supplies with instructions for their use.
- Immediately seek medical advice in case of poisoning or infection.
- When driving a vehicle with attached but not working sweeper, ensure the safe transportation height of ~ 0.3m.
- The working speed should be adjusted/selected according to the condition of the pavement, the purpose and the results of the work to be carried out.
- In order to maintain proper manoeuvrability, the sweeper should be adjusted to the vehicle according to the manufacturers' recommendations and the suspension system used. The attachment rules from the sweeper manufacturer are described in section 5.1. Installation of the sweeper - of this User Manual.
- Do not leave the vehicle with the sweeper on a hillside or other sloping surfaces, without securing the vehicle from rolling down. Sweepers should be lowered to the ground. Put wedges under the wheels of the vehicle.
- Switch off the drive, the engine of the vehicle, immobilise the vehicle and wait for all moving elements of the equipment to come to a complete stop and the pressures to reduce prior to commencing any activity related to preparing, assembly, disassembly or adjustment.
- After the first hour of operation, check all disjoint connections like bolt connections.
- The sweeper should be kept on a flat, level, paved surface, out of the reach of bystanders and animals.
- Aggregating - mounting and dismounting the machine must be done with care, paying particular attention to the structural components responsible for attachment to the vehicle and the condition of the safety devices.

- The sweeper must have all guards covering movable parts in place (if the manufacturer has equipped the sweeper with such guards). The guards must be complete and fully functional.
- The sweepers have hydraulic power systems. During aggregating and operation, the condition of system leaks, cable routing and cleanliness of connectors should be monitored.
- Weight of the sweeper suspended on a vehicle can affect the vehicle's manoeuvrability. In such situation exercise particular caution.
- The User Manual must be kept with the machine. If you loan the machine for use, ensure that it is in good technical condition, and that it is complete with the User Manual.
- Prior to commencing work, prepare the sweeper in line with the recommendations specified in point 5. Use of the machine, Installation of the sweeper.
- It is forbidden to transport or move a vehicle with a attached machine on the suspension system on public roads in an unfolded state - ready for work.
- When driving with the machine folded up for transport on public roads, a warning-light device and a triangular plate distinguishing slow-moving vehicles must be used at all times.
- Check the technical condition of the machine during initial start-up.
- Follow the recommendations described in Chapter 6 due to wear and tear. Operation and maintenance.
- When commissioning and transporting the sweeper, inspect its technical condition to check for damage.
- Standing under the raised machine is not allowed to prevent being crushed by the components of the machine.
- When adjusting, keep your fingers and limbs away from the parts of the machine.
- When using the sweeper, the operator must make sure nobody gets close to or stays near it.
- Ensure suitable visibility when u-turning, reversing or manoeuvring the machine, or ensure assistance from a properly trained person.
- Do not stay between the vehicle and the sweeper when the vehicle's engine is running.
- It is forbidden to work and load only one side of the machine. Make sure to load the set symmetrically - it's the basis for safe and efficient work!
- Exercise particular caution when making turns or u-turns with the machine mounted on the vehicle, both during transport as well as while making u-turns, particularly with people, animals or objects near the machine.
- The vehicle working with the sweeper should have a sealed and clear cab.
- Operation without a dirt tank is prohibited.

- Never leave the vehicle unattended when the engine is running. Before leaving the operator's seat, lower the sweeper to the ground, switch off the vehicle's engine, remove the ignition key, and apply the handbrake.
- Avoid wearing unbuttoned, hanging parts of work clothing during the operation, assembly, disassembly or adjustment. Keep them away from any machine parts that are likely to catch them.
- The sweeper should be kept and stored on a flat, hardened surface, under a protective canopy in places protected from unauthorized access of persons and animals, thus eliminating the risk of accidental injuries.
- In case of failure, immediately turn off the drive transmitted from the vehicle.
- People under the influence of alcohol or other intoxicants must not operate the machine.
- Any maintenance operations, which require working close to the sweeper, must be carried out with the sweeper lowered to the ground and with the vehicle engine stopped.
- The sweeper can only be controlled from the operator's cab of the vehicle to which the machine is connected.
- It is forbidden to work with an internal combustion engine vehicle with a mounted sweeper in enclosed spaces. This poses the risk of exceeding acceptable concentrations and intensities, causing poisoning.



Failure to follow the above rules may be dangerous for the operator and bystanders and can cause damage to the machine. The user is responsible for damage resulting from non-compliance with the above rules.


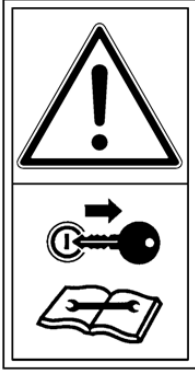









Sweepers in an unfolded, ready-to-work state are not intended for travel on public roads. It is prohibited to transport the machine mounted on the suspension system of a vehicle on public roads in an unfolded state.



A dirt tank is an integral part of the machine. It protects the sweeper brush against the ejection of swept debris.

It is prohibited to operate the machine without a dirt tank!

2.2. Safety marking on the sweeper

 <p>1.0 - Prior to using the machine, read the User Manual</p>	<p>C.2.26</p>  <p>1.1 - Switch off the engine and remove the ignition key before any servicing or maintenance procedures</p>	<p>C.2.7</p>  <p>1.5. 1-. Do not approach or touch the rotating brushes</p>	
<p>C.2.1</p>  <p>1.2.1 – Keep a safe distance from the machine. Crushing of toes or foot - Force applied from above</p>	<p>A.7.2</p>  <p>1.2 - Keep a safe distance from the machine. Do not allow unauthorised persons within the range of 50 m from the machine</p>	<p>C.2.44</p>  <p>1.8 – Avoid exposure to liquids flowing under pressure. Read the User Manual and learn about the maintenance works</p>	
<p>3.1 – Hydraulic system pressure warning</p> <div style="border: 1px solid black; padding: 5px; display: inline-block;"> <p>16 MPa</p> </div>		<p>2.3 – Wear a protective suit</p> 	<p>2.6 – Wear protective footwear</p> 
 <p><i>Stickers firmly affixed to the machine in a visible location, unaffected by abrasion and dirt. The marking must be legible during the normal life of the machine.</i></p>		<p>2.4 – Use safety gloves</p> 	<p>2.8 - Lifting points on the sweeper during movement</p> 

2.3. Hazards present during sweeper operation, residual risk:

No.	Risk	Hazard source (cause)	Possible consequences of risk	Risk preventive measures
1	Overloading the locomotor system (physical load)	Working in a standing position, inclined-forced position, walking, moving objects	Conditions of the locomotor system, spine injuries, strained tendons	Read and understand the User Manual; do workplace training in carrying weights standards for the manual handling, correct methods of lifting and carrying loads, getting other persons' help, and the use of handling devices such as jacks and winches.
2	Fall on the same level (tripping, slipping, etc.)	Uneven ground, mess – lying and standing objects, obstructed traffic routes, slippery surfaces	Contusions, dislocations, sprained joints, broken bones, cuts	Appropriate work footwear, use of personal protective equipment, level ground, paying attention, maintaining order, familiarisation with user manual
3	Hitting protruding and sharp parts of the machine	The machine and its surroundings	Injuries to the body, contusions, bumps, bruises and cuts	Proper installation of the machine, safe space for movement, appropriate organization of work, maintaining caution, using personal protective equipment (helmet, gloves), reading the User Manual
4	Impact from moving objects, raised machine	Ejected, falling materials, objects - turf, gravel, stones. Falling machine	Contusions, cuts	Maintaining caution, marking the danger zone, banning walking in the immediate surrounding of the working machine, banning staying under a suspended load – suspended machine, use of personal protective equipment (helmet, safety glasses), reading the User Manual
5	Sharp, dangerous edges	Protruding parts of the machine structure, use of hand tools	Finger and hand wounds, scratches, catching parts of one's clothes on the equipment	Personal protective equipment – safety gloves, buttoned up work clothes, exercising special attention
6	Movable machine parts	Moving machine parts, moving arms, no guards on moving parts	Drawing-in hazard, limb wounds, crushed fingers and palms	Ban on walking in the immediate surrounding of the working machine, exercising particular caution, keeping safe distance from movable parts, reading the User Manual
7	The weight of the suspended and standing machine,	Improper assembly, aggregating, poor machine positioning, poor operation, leaving a suspended machine on a vehicle	Contusions, injuries, crushed feet, hands	Exercise extreme caution, prohibition of staying under the weight - raised machine, use of personal protective equipment - protective footwear, protective gloves, safe work, proper organisation, use of the assistance of another person, use of levers, cranes, familiarisation with this User Manual
8	Micro climate - variable weather conditions	Work carried out in a variety of weather conditions, dust and dirt drifting during work	Overheating (heatstroke), sunburn, poisoning, pneumoconiosis	Appropriate work clothing, drinks, sunscreen, rest, familiarisation with the User Manual, vehicle cab ventilation, dust masks, reducing speed, changing direction of work
9	Hydraulic system	High pressure in the hydraulic system, poor condition of hydraulic couplings, hoses, leaks	Wounds of fingers, hands, injection, poisoning	Prohibition of moving, approaching and making adjustments while the machine is running, replacement of tubes according to the manufacturer's recommendations (every 3 years), maintaining special care, use of protective clothing, use of safety goggles, regular examination of the hydraulic system condition, reading and understanding the User Manual
10	Noise	Too high rotational speed of the vehicle, damaged, loose or vibrating parts	Irritation, loss of concentration, neuroses	Making sure the vehicle and the machine are fully operational, regular maintenance of the equipment, keeping the revolutions of the

				vehicle engine in the desired range, reading the User Manual
--	--	--	--	--

3 Intended use

The sweeper is used for removing dirt created on all paved surfaces, sweeping squares, traffic roads and car parks, picking up and removing loose materials.

This is a professional equipment for agricultural tractors with a standard three-point linkage.

Mounting to the vehicle is possible via : three-point linkage. The manufacturer provides a wide range and individual approach to linkage.

The main working element is a rotating roller brush fixed across the direction of travel, the auxiliary - side bucket brush. The brushes are made of wear-resistant materials and provide a strong and resistant working element. This enables the machine to be perfectly matched to the task at hand, the conditions and the type of surface to be treated.



Fig.1 Working elements – sweeper brushes

Complying with the requirements for the use of the machine, its operation and repairs strictly according to the manufacturer's guidelines is the condition for the use of machine as intended. The sweepers must be operated, maintained and repaired exclusively by persons familiar with their specific characteristics and acquainted with the rules of conduct in terms of health and safety.

The manufacturer has a wide range of machines on sale. It also provides expert consultancy in terms of selecting the right accessories according to each user's needs.



Any doubts concerning the machine's intended use should be resolved by contacting its manufacturer. Selecting the right equipment and knowing its intended use makes its operation safer.

4. Description of the device

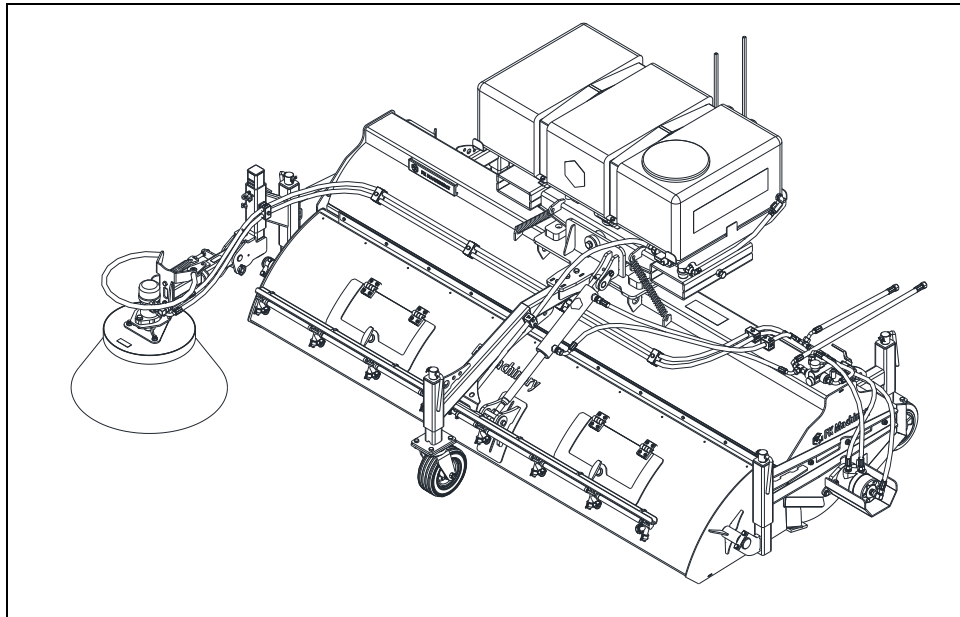


Fig.2 General view – sweeper

The sweeper has been equipped with additional components and systems for high quality workmanship. These include:

- dirt tank
- side brush
- sprinkler system to reduce effects of dusting
- ground following system - sweeper arm
- system of moving the sweeper sideways during operation (only for E version)

The sweepers are designed for use with a vehicle having a linkage system in the standard of front-linkage used in agricultural vehicles.

The main structural element of the sweeper is the **body of the machine**. Made of laser-cut steel components and profiles welded together. The body is hinged to **the sweeper arm**. The sweeper arm connected to the linkage system via an intermediate floating system holds the sweeper and allows it to follow the ground.

The support wheels (3pcs) have infinite height adjustment, which allows you to set the working height of the machine very precisely. All components are made using technology to ensure high resistance properties.

Working width and dimensions of sweepers according to type - tailored to user needs - **Table 1**



The adjustment of the machine to the vehicle must be carried out taking into account the vehicle manufacturer's notes and its suspension system.
The machine can only be controlled from the operator's cab. After adjusting the height of the suspension - with the support wheels.

4.1. Equipment and accessories

4.1.1. Basic

The basic equipment of the machine includes:

- Hydraulic control system with power supply lines
- User Manual
- Warranty Card



The machine is not supplied with a portable warning light or a triangular slow vehicle warning sign. These elements can be purchased separately from the manufacturer or in a farming equipment depot. Each user of the machine should have a fully functional warning light and a triangular slow vehicle warning sign. Failure to install these elements during transport may result in an accident. The machine user is responsible for the damage resulting from the accident.

4.2 Sweeper vertical ground following system.

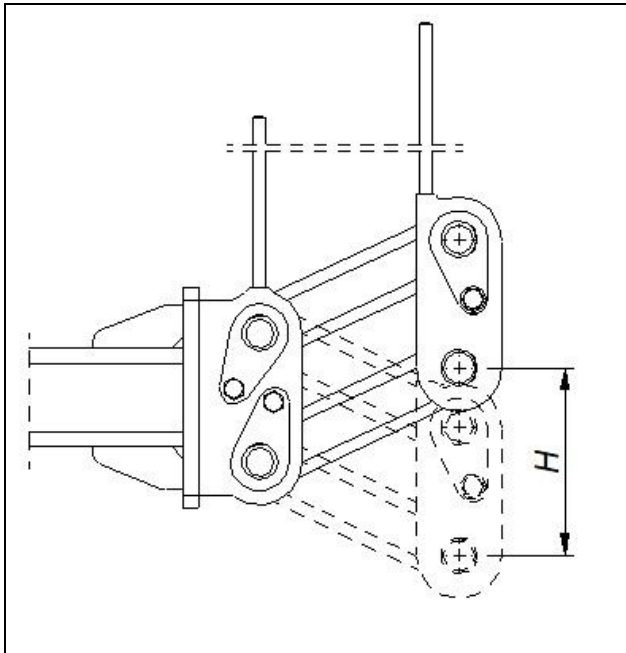


Fig. 3 Vertical ground following system.

To improve working results the sweeper has been equipped with a vertical ground following system in relation to the vehicle mount during operation. The shift H is 150 mm for all sweepers.



It is forbidden to transport or move a vehicle with a attached machine on the suspension system on public roads in an unfolded state - ready for work. When driving with the machine folded for transport on public roads, fold the side brush into an upright position.

4.3. Technical specification

Table 1 TECHNICAL CHARACTERISTICS OF THE CY... SWEEPERS

No.	Specification	UOM	Machine size			
1.	Machine type – INDEX	–	CY120	CY150	CY180	CY230
2.	<i>Overall dimensions</i>					
	Width	[cm]	160-320			
	Depth	[cm]	135-234			
	Height in working order	[cm]	0.95 – 136			
3	Weight	[kg]	236-435	255-488	320-562	313-611
6.	Dirt tank capacity (theoretical)	[dm ³]	90	120	150	180
7.	Water tank capacity	[dm ³]	100			
8.	Drive and steering	–	Hydraulic			
9.	Machine type	-	Suspended, heavy class			
10.	Working pressure of the hydraulic system	[MPa]	16			
11.	Transport clearance	[mm]	300			
12.	Recommended sweeping speed	[km/h]	5 ÷ 10			
13.	Number of operators	[pcs.]	1			
14.	Vehicle power requirement	[HP]	40+			

4.4. Forces affecting the suspension system

The user must ensure that the forces acting on the machine are evenly and symmetrically distributed. Do not operate the sweeper with a load on one side.



To increase operating safety, care should be taken to ensure that the forces applied during operation load the machine evenly. It is imperative to inspect the material being transported.



When assembling and transporting the sweeper, the weight of the machine to be transported must be taken into account. Be sure to read the User Manual and the weight that can be transported on the suspension system of the carrier/vehicle to which you intend to aggregate the machine and compare it with the weight of the machine - Table 1.

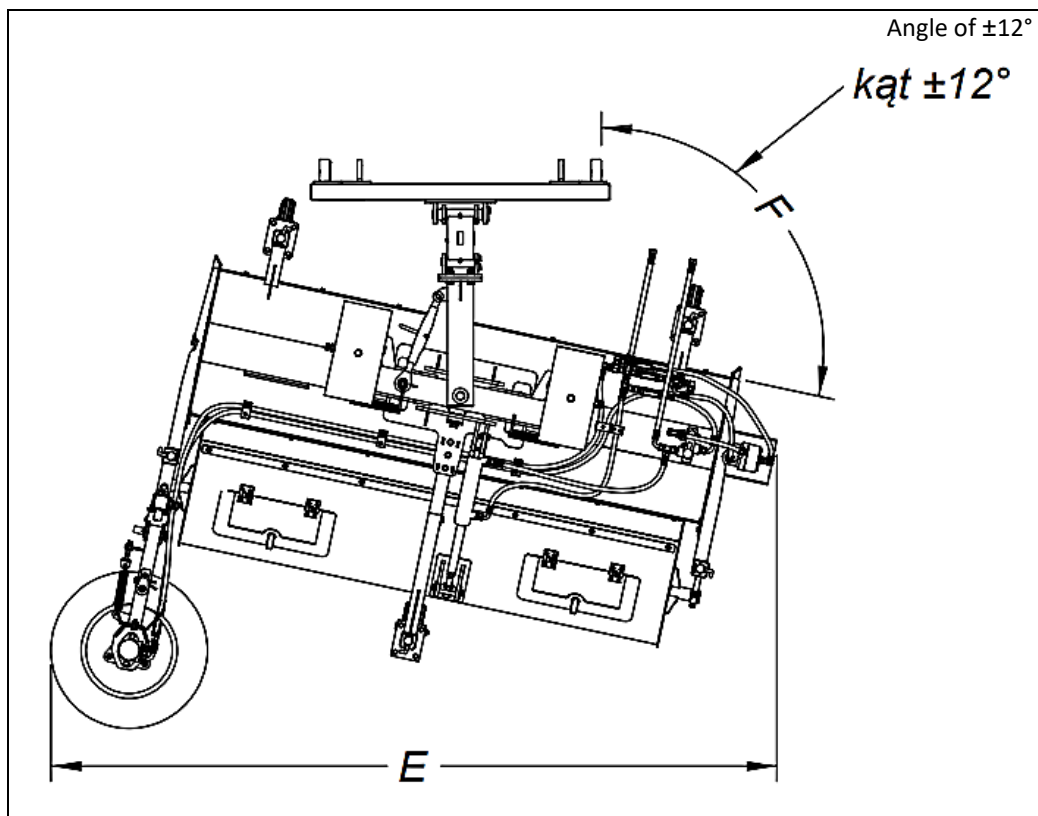


Fig.4 Magnitude of horizontal deviation.

5. Machine operation

5.1. Installation of the sweeper



Make sure that the connecting parts of both, the vehicle and the machine, are suitably adjusted to each other.

In case of any doubt, always ask the vehicle or the machine manufacturer.

I. Connecting the mechanical systems of the vehicle and the sweeper.

Depending on the three-point hitch suspension system type, make sure the original safety elements are present. Each time the machine is mounted on the vehicle, check the connecting elements, i.e. pins and plugs, for wear.



To dismount the sweeper, follow the above instructions in a reverse order, exercise particular caution when disconnecting the mechanical system between the machine and the vehicle.

II. Installing power hydraulic system

The sweepers are equipped with lines to be connected with the connection pipes of the supply system of the vehicle. Make sure the lines are routed correctly and the hydraulic connections are clean. The connection should be made in accordance with the diagram in Fig. 6, 7, 8



Reduce pressures before starting any work on the hydraulic system. Switch off the engine and wait for the pressures to cease. Secure the vehicle and machine. Use personal protective equipment: gloves, goggles, footwear, work attire.

5.2. Hydraulic control systems

The sweepers are fitted with hoses with the ends of the hydraulic power system. Control of the machine's operation, once it has been connected in accordance with the User Manual and its operation checked, is carried out from the vehicle operator's cab.

For starting/stopping the side brush, the machine has a manual valve that allows a constant selection of the working mode - main brush or main and side brush Fig. 5

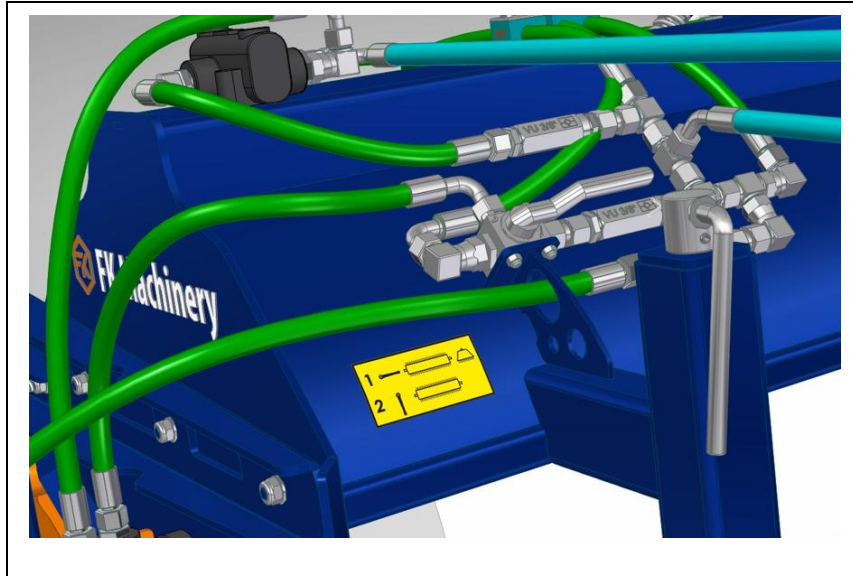


Fig. 5 Working mode - side brush start valve

The manufacturer has provided three types of hydraulic control systems for the sweepers it produces to ensure high quality service.

Fig. 6 Versions with side brush and hydraulically emptied dirt tank.

Fig.7 Versions with side brush and manually emptied dirt tank.

Fig.8 E Version with electric control.

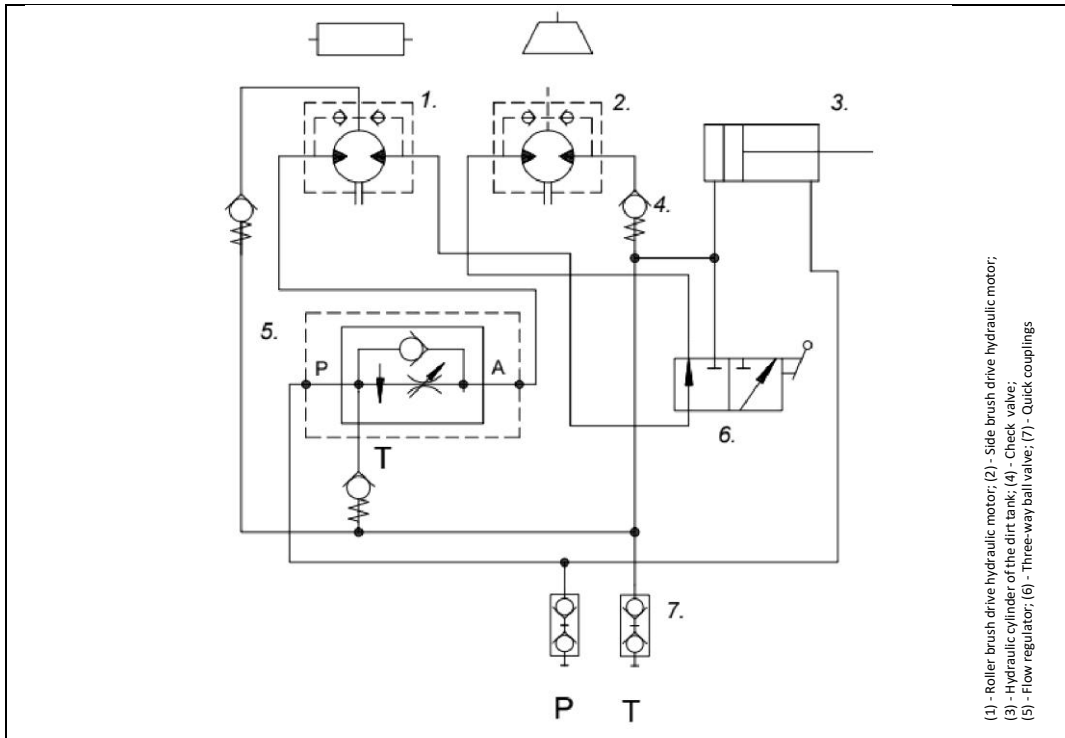


Fig.6 Hydraulic system diagram.

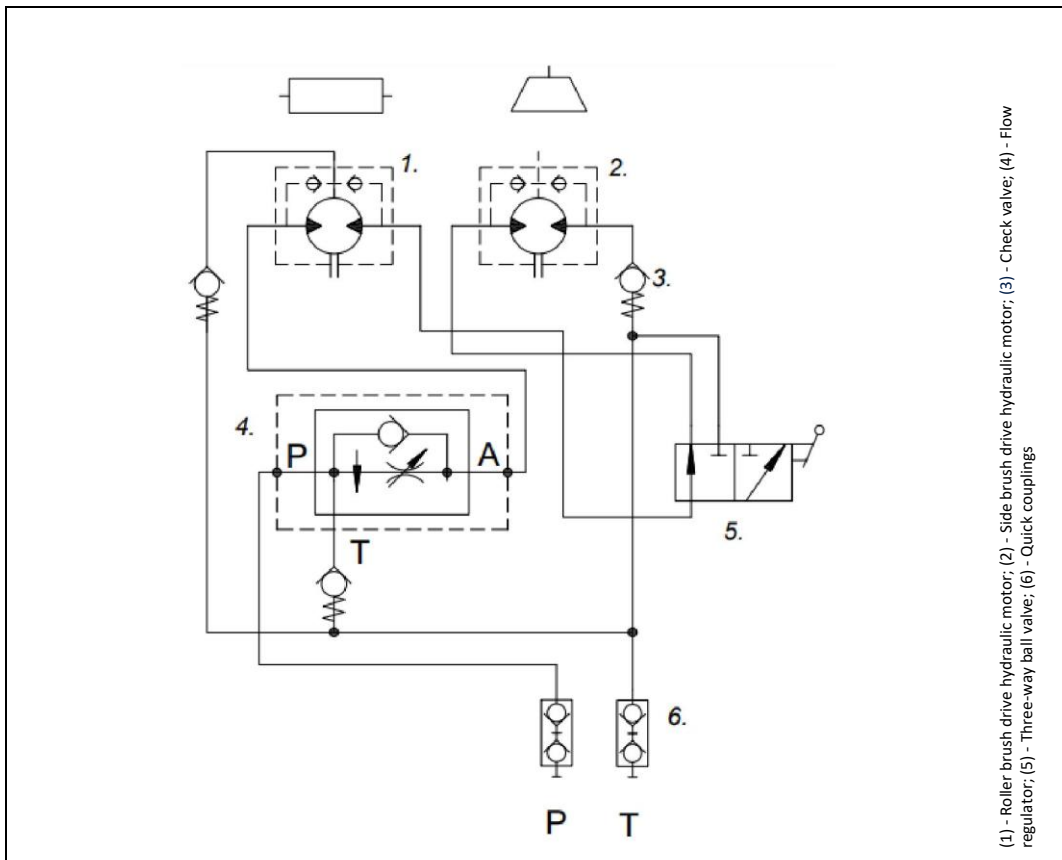


Fig.7 Hydraulic system diagram.

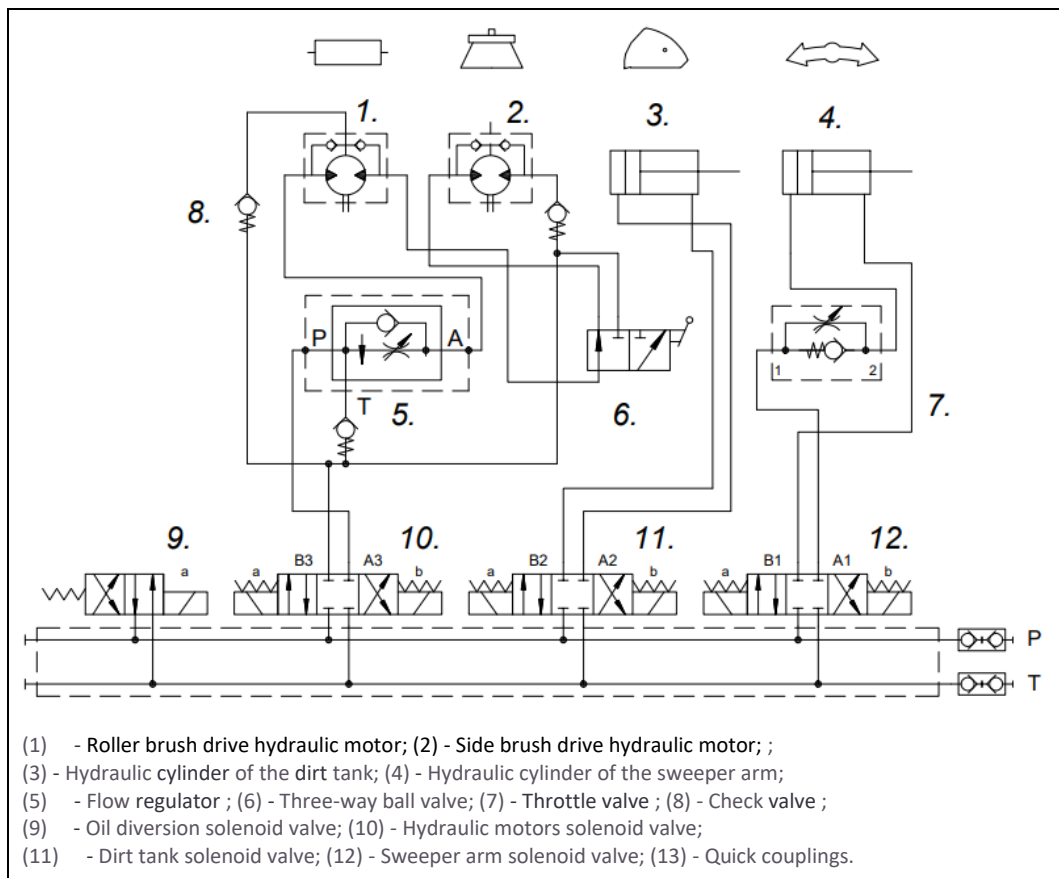


Fig.8 Hydraulic circuit diagram E Version

6. Operation and maintenance

All the machine operations can be performed by the operator of the vehicle to which the sweeper is attached, providing they have proper authorisation to operate this vehicle.

Read the User Manual of the sweeper prior to operating the equipment.

- Maintenance after work

Each time the machine has finished working, it should be cleaned and placed on a flat, firm surface, securing it against rolling with wedges. These treatments should be followed by an inspection of the structure for cracks and a review of the connections of the parts and assemblies. Replace damaged and worn out parts with new ones. Check all the bolted joints and tighten any loose bolts and nuts according to Table 2. All safety signs placed on the machine should be kept clean.

Table 2

TIGHTENING TORQUE VALUES FOR BOLTS AND NUTS

Durability	6.8	8.8,	10.9	12.9
Metric thread	Tightening torque [Nm]			
M6	7.6	10	15	18
M8	18	25	36	43
M10	37	49	72	84
M12	64	85	125	145
M14	100	135	200	235
M16	160	210	310	365
M18	220	300	430	500
M20	310	425	610	710
M22	425	580	820	960
M24	535	730	1050	1220

6.1 Sweeper height adjustment

The sweeper is subjected to high pressures and loads during operation. In order to achieve a high level of performance and durability of the machine, it should be set up properly. The three support wheels - which determine the pressure of the roller (main) brush on the ground **1**, the linkage of the dirt tank **2** and the position of the side brush **3** - are adjustable.



Make adjustments on a flat paved surface.

All adjustment and maintenance work must be carried out with the vehicle engine switched off, the machine lowered and the vehicle and machine secured against rolling.

Table of sweeper setting dimensions according to Fig. 9

Designation	Adjustment	Dimensions [mm]	Notes
1	Roller brush	60 ÷ 120	
2	Side brush	15 ÷ 30	
3	Dirt tank	10 ÷ 20	Emptied tank

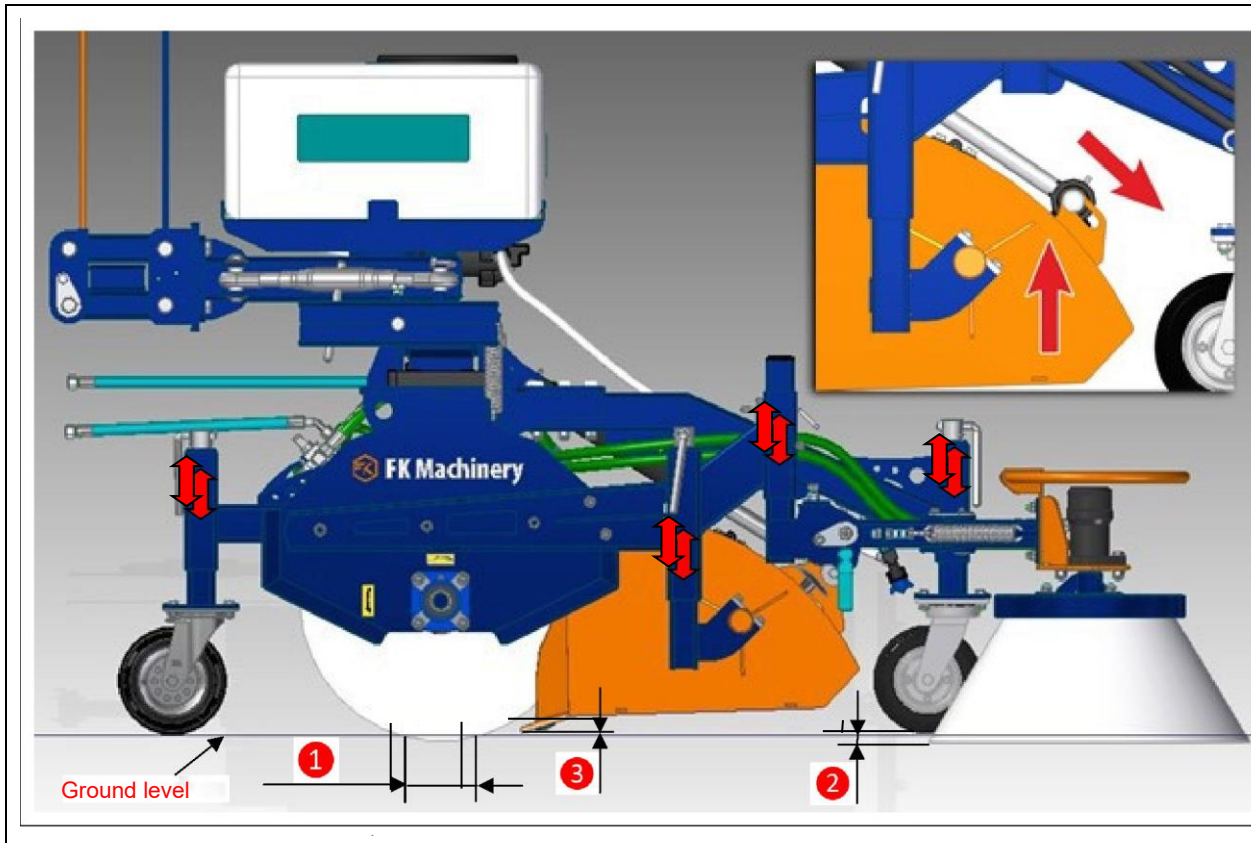


Fig. 9 Setting up the sweeper for operation



The side brush has a hinged-connected folding arm that protects the brush from lateral loads. The correct adjustment of the position of the brushes in relation to the substrate, as well as the porosity of the substrate, has an impact on the wear rate of the brushes.

The sweeper should be adjusted with the wheel knobs so that the body and tank are parallel to the ground surface to ensure even wear of the roller brush. The height of the tank blade above ground level should be 10-20 mm. This is done using the knobs for adjusting the tank's hooks. In addition, as the roller brush wears down, the position of the tank in its pivot axis needs to be aligned by adjusting the attachment point of the actuator piston rod eye in the tank clip - preview in Fig. 9.

6.2 Brush wear



The brushes of the sweeper should be replaced upon finding:

- deficiencies in the continuity of brushes (missing fibres),
- uneven wear, mechanical damage,
- wear and tear that does not allow operation settings to be reached



The manufacturer has assumed a maximum wear:

- roller brush max 120mm / diameter
- side brush max 60mm / height

6.3 Operating the sprinkler

The sweeper is equipped with a pressurised sprinkler system to reduce the effects of sweeping dusty materials. The spray medium is tap water - clean water.



The sprinkler system is controlled from the vehicle cab via a switch located in the pump's power plug.

It is forbidden to run the sprinkler system pump without water.

Top up the water in the tank before starting.

After the work has been carried out or when out of use for a long time - empty the tank.

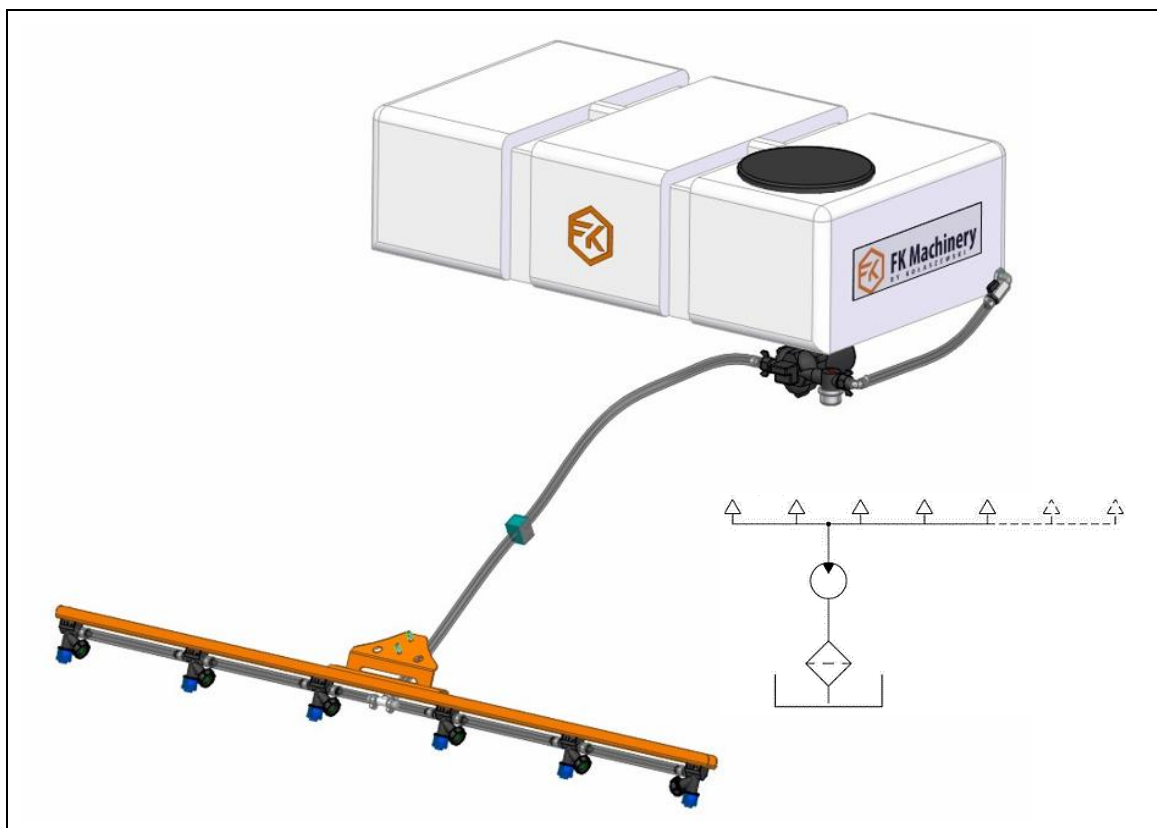


Fig. 10 Sweeper sprinkler system

6.4 Out-of-season maintenance

Includes all activities specified in the item “Things to do after your work has been completed”. In addition, the sweeper should be stored under a canopy/roof on a flat and hard surface. Make sure the paint coat is intact. If there are any defects in the coat, clean the spot and apply a new protective coating.



After operation and before each use, the sweeper should be inspected for wear, cracks, dents and deformations (bends)

Welded joints (welds) should also be visually inspected. If cracks and dents are noticed - the damaged parts of the sweeper must be replaced with new (defect-free) ones.

In particular, the power hydraulic system should be inspected for damage and leaks.

According to the manufacturer's orders, the hydraulic lines must be replaced after a period of 3 years of use.

Any repairs to the steel structure of the machine are only permitted at the manufacturer's premises or at a specialist workshop that has the manufacturing and repair technology.

- Greasing flexible joints

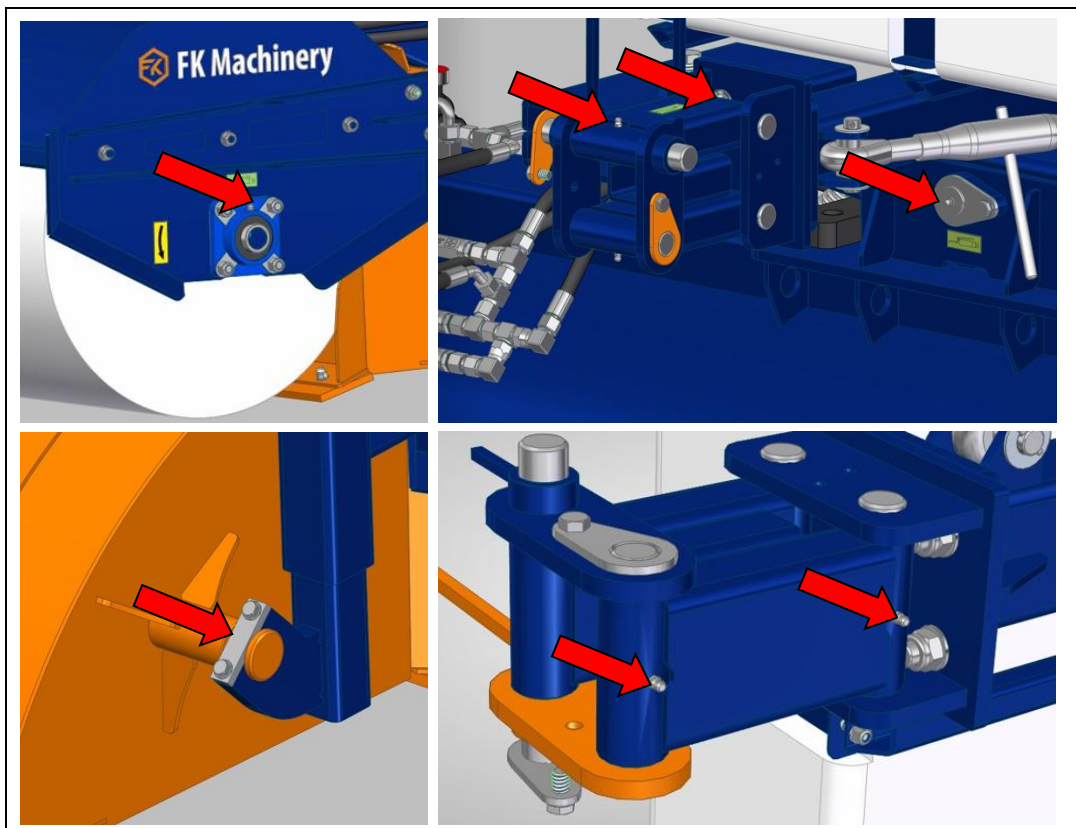


Fig.111 Main lubrication points of moving joints

Basic maintenance includes lubrication of moving joints. The machine has lubrication points (grease nipples) located in visible areas of the machine. They mainly concern moving joints Fig.11. All these joints should be lubricated (protected) at least twice a year with solid ŁT-42 lubricant. Remove soiling and old grease before applying new grease. Any parts showing wear must be replaced with new ones.

6.5 Scrapping, environment

In the event the machine is worn to the extent that prevents its further use, it should be scrapped. This also applies to regular repairs and replacement of damaged parts. Clean the machine thoroughly before scrapping. Then disassemble, sorting the parts according to the type of materials used. Dispose of the segregated parts in accordance with environmental regulations.



The machine must be emptied of hydraulic oil before disposal to prevent environmental contamination. Dispose of the oil obtained in accordance with environmental regulations

The machine is 100% environmentally friendly. 100% of the materials used in the production process are recyclable. Worn machine parts must be disposed of in line with the local environment protection regulations. Prevent oil leakage throughout the period of use of the machine, as oil may pollute the environment.

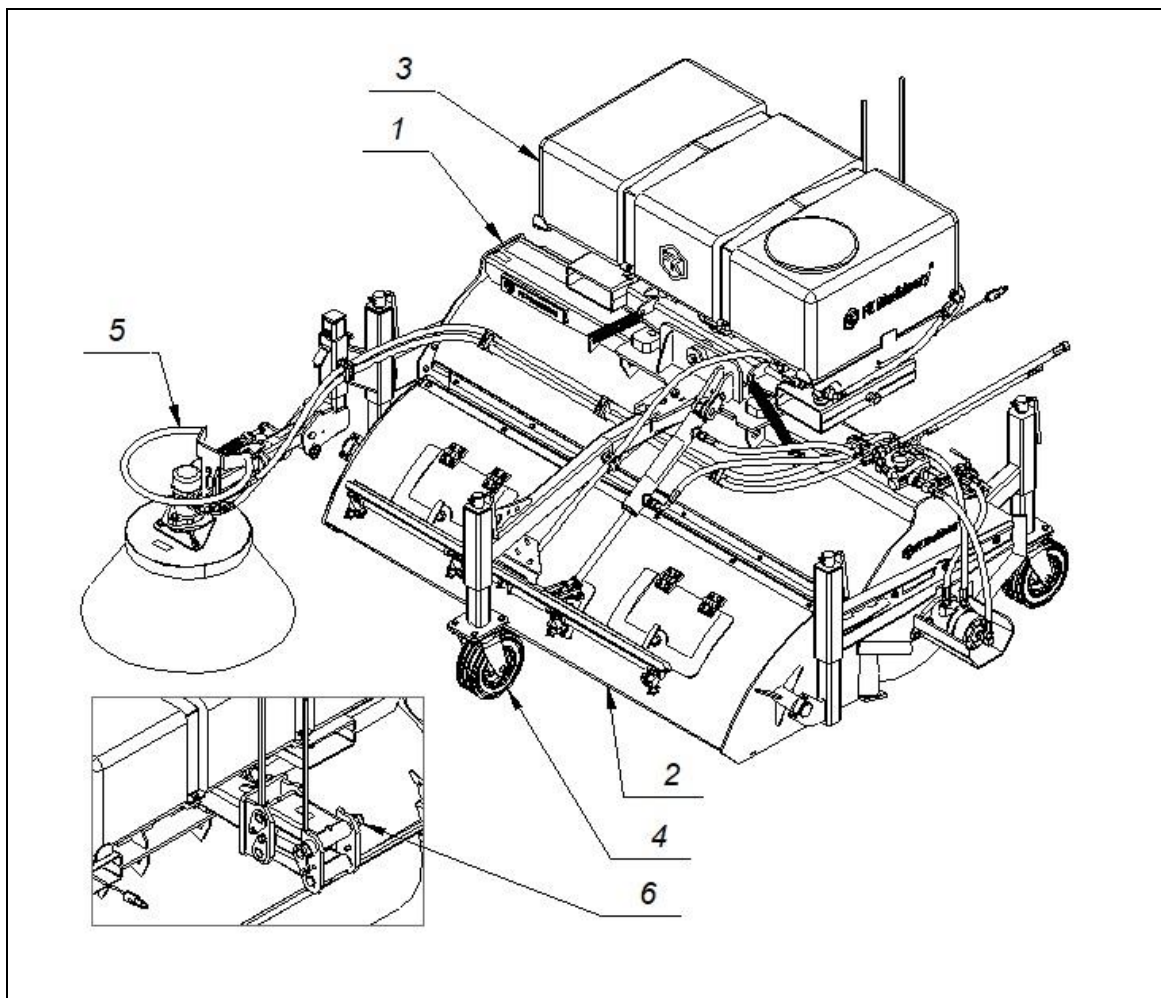
7. Spare parts catalogue

All spare parts for the sweeper are available from the manufacturer. Purchases can be made by specifying the type of purchased machine.



The catalogue does not include standard parts available in retail, which can be purchased in general shops for the agricultural industry. Standard parts (bolts, nuts, pins, etc.) used interchangeably must not be of a different strength to those used by the manufacturer.

Sweeper – general construction.



(1) - Body; (2) - Dirt tank; (3) - Sprinkler unit;
(4) - Running wheels; (5) - Side brush assembly; (6) - Vertical ground following

8. Warranty

WARRANTY CARD

Serial No.	Type
Year of manufacture	Quality Control Department

Under the warranty, the manufacturer undertakes to repair, free of charge, any physical defects revealed during the warranty period, i.e. 12 months from the date of sale.

The manufacturer will be exempt from liability under the warranty in case of:

- Mechanical damage to the machine after it has been handed over to the user;
- Improper operation, maintenance or storage of the machine, in particular, contrary to the User Manual;
- Repairs carried out by unauthorized persons without the consent of the manufacturer;
- Introducing design changes without consulting the manufacturer;

The warranty card is valid provided it has the vendor's signature and the date of sale certified with the company stamp. It must not contain deletions and amendments by unauthorized persons.

A duplicate of the warranty card may be issued upon a written request after presentation by the user of the proof of purchase.

In the case of an unjustified service call to warranty repair, the related costs will be borne by the user.

The user will file complaints within 14 days from the date of damage/defect directly to the vendor.

The manufacturer will carry out warranty repairs within 14 days from the date of the complaint. The warranty will be extended by the repair time counted from the date of the complaint until to the date of completion of the service if the defect prevents the use of the machine.

Date of sale: _____
(Day, month, year)

(signature and stamp of the point of sale)

WARRANTY REPAIRS RECORDS

Filled in by the manufacturer

Date of complaint claim: _____

The scope of repair and parts used: _____

Date of complaint processing:

Warranty extended until: _____

(signature and stamp of the service)

Date of complaint claim: _____

The scope of repair and parts used: _____

Date of complaint processing:

Warranty extended until: _____

(signature and stamp of the service)

Date of complaint claim: _____

The scope of repair and parts used: _____

Date of complaint processing:

Warranty extended until: _____

(signature and stamp of the service)

Date of complaint claim: _____

The scope of repair and parts used: _____

Date of complaint processing:

Warranty extended until: _____

(signature and stamp of the service)

9. Declaration of Conformity

CE Declaration of Conformity

Manufacturer: **Kołaszewski Sp. z o.o.**
ul. Lęborska 22
77-100 Bytów

hereby declares that the machine:

Machine name: **SWEEPER CY**

Machine type, INDEX: CY.....;

Serial number:

Intended use of the machine:

Agricultural machine - The sweeper is used for removing dirt from all paved surfaces, sweeping squares, traffic roads and car parks, picking up and removing loose material

to which the declaration refers, meets the requirements of:

DIRECTIVES

- **Machinery Directive 2006/42/EC** of 17 May 2006 (OJ L 157 of 9 June 2006, p. 24)

HARMONIZED STANDARDS

- **PN-EN ISO 4254-1: 2016-02E** Agricultural machinery. Safety. Part 1: General requirements
- **PN-ISO 4413:2005** Hydraulic drives and controls. General rules relating to systems.
- **PN-EN 12100: 2010** Safety of machinery. General principles for design. Risk assessment and risk reduction
- **PN-EN 60204-1:2018** Safety of Machinery - Electrical equipment of machines - Part 1: General requirements
- **PN-ISO 11684: 1998** Safety signs and hazard pictograms
- **PN-EN 14120: 2016-03:** Machinery safety - Guards - General requirements for the design and construction of fixed and movable guards

This declaration of conformity shall cease to be valid, if the machine is modified in any way without the consent of the Kołaszewski Sp. Z o.o.

.....
place, date

.....
Full name of authorised person